



BAUER

FOR A GREEN WORLD

MAGNUM SX

Pumps for Slurry and Viscous Liquids



MAGNUM SX

Pumping and Chopping

- Can handle up to 12% solids
- Capacity of up to 300 m³/h (1320 USgpm)
- Manometric head of up to 140 m (459 ft) WC
- For pumping and chopping
- High cutting performance
- Largely insensitive to solid particles
- Efficient and economical
- Low operating costs
- Easy maintenance
- Multi-Drive – different driving options
- Self-primer (optional equipment)
- Automatic pressure regulation (optional equipment)

Product series Magnum SX

- SX 1000 with heavy-duty gear as tractor pump
- SX 2000 with heavy-duty gear for Diesel engines
- SX 2600 with pedestal for electric drive motors

Mounting variants

- SX 1000 on a pump trolley
- SX 1000 on a hoisting frame for three-point linkage
- SX 2000 on a trailer with Diesel engine
- SX 2000 on a mobile unit with Diesel engine
- SX 2600 on a base plate with electric drive motor

Applications

- Agriculture:** hose lines, slurry irrigation, pump tankers, mobile and stationary transfer pumps, biogas plants
- Foodstuff industry:** slaughter houses, feces
- Environmental technology:** sewage sludge, digested sludge, fecal sludge
- Bio-energy industry**

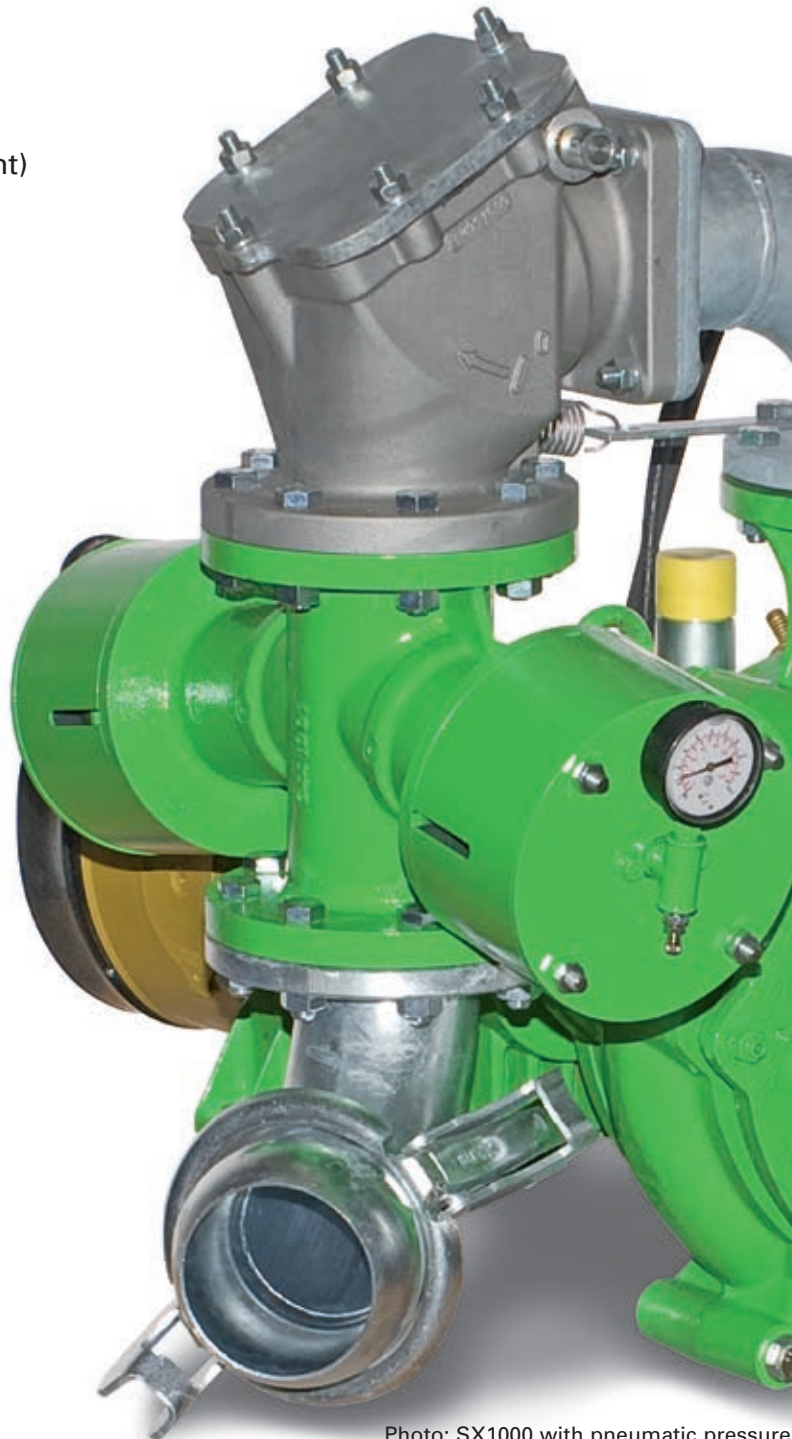
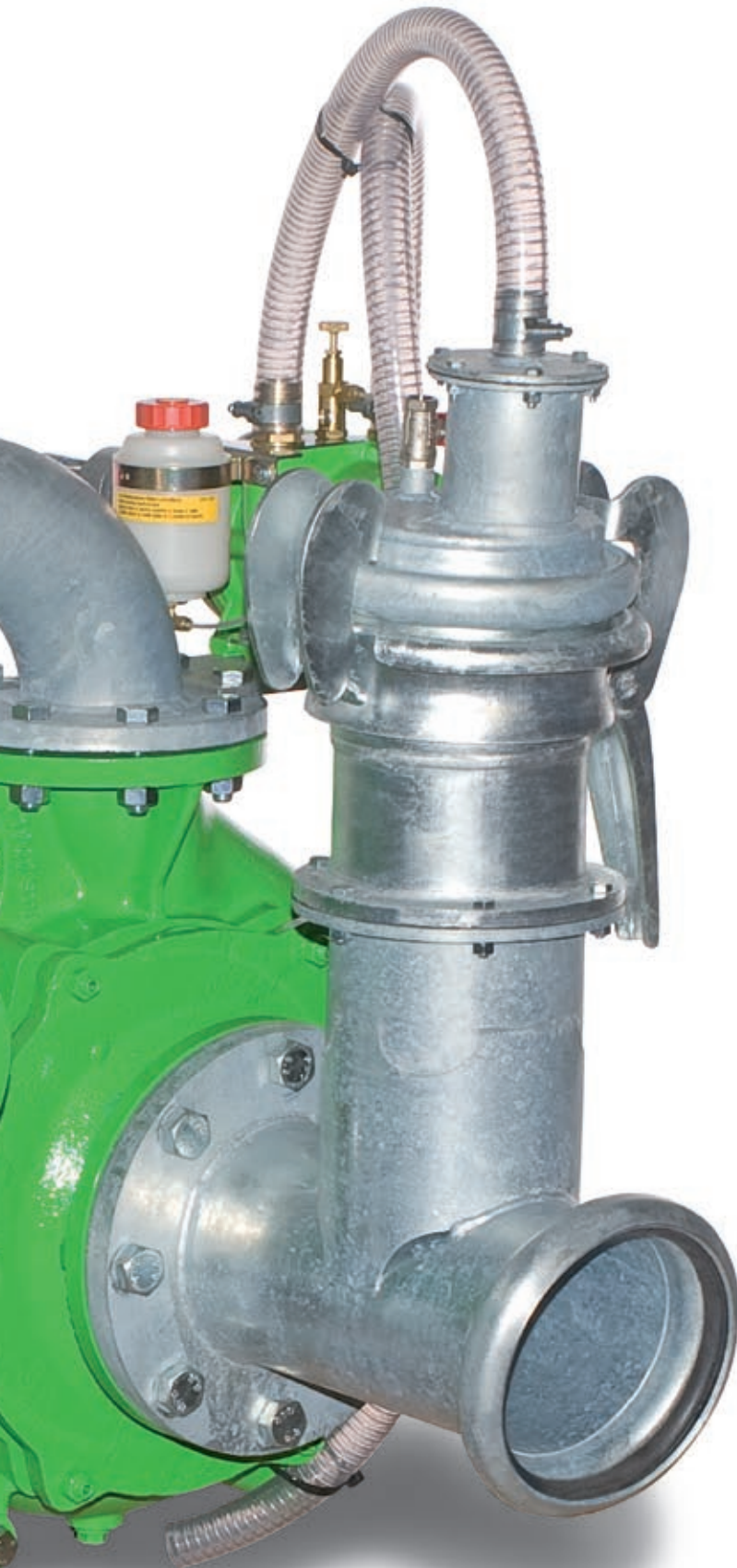


Photo: SX1000 with pneumatic pressure



Technical features

- **Pump Housing**
Of special design, ensures unobstructed delivery of viscous liquids
- **Cutting blades**
Easily adjustable to maintain the ideal cutting gap, draw cut, high-grade casting
- **Suction flange**
Ensures enormous suction capacity, avoids turbulences
- **Protection plates**
For a long service life
- **Shaft sealing**
Of industrial standard, double-acting mechanical seal with oil reservoir
- **Pump shaft and bearing**
Amplly dimensioned
- **Gearbox**
Of compact industrial design
- **Automatic pressure regulation** (optional equipment)
For changing conditions of use



Impeller

High-grade casting, maximum wear-resistance, ideal runner blade geometry, draw cut, best suited for liquids containing straw or grass, open design of impeller for viscous liquids, double-acting, keeps the sealing space free of solid particles



Self-primer (optional equipment)

Mechanical, hydraulic or electro-mechanical execution

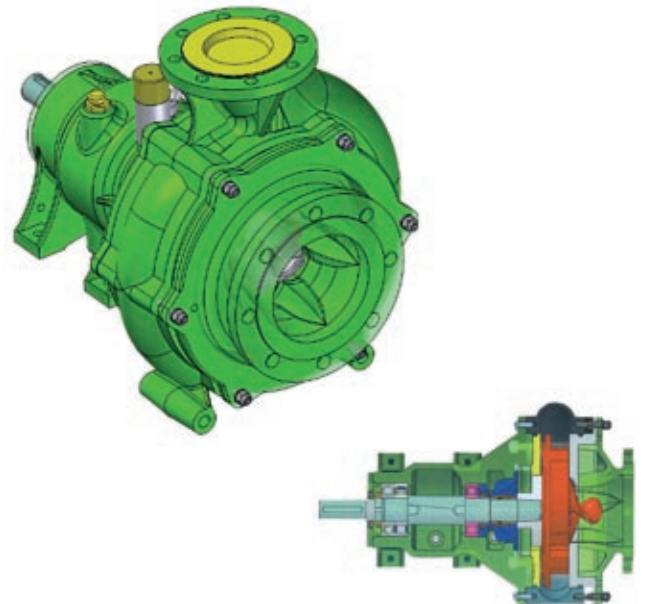
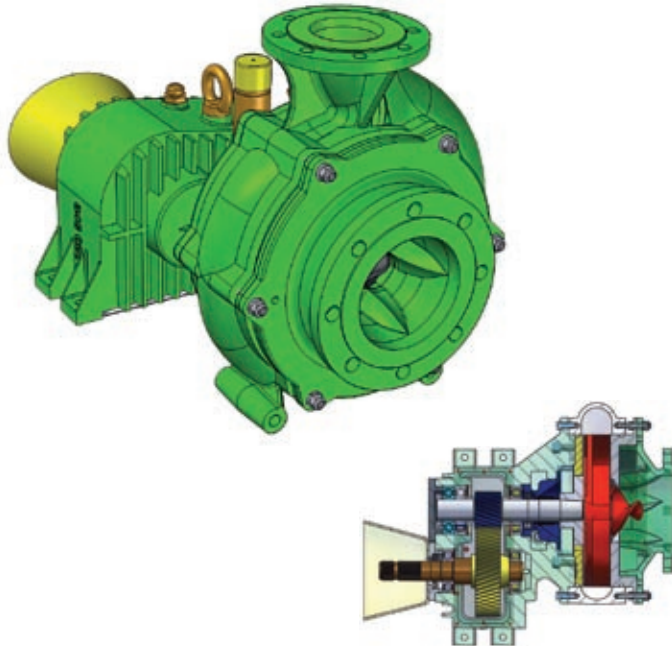


Automatic pressure regulation (optional equipment)

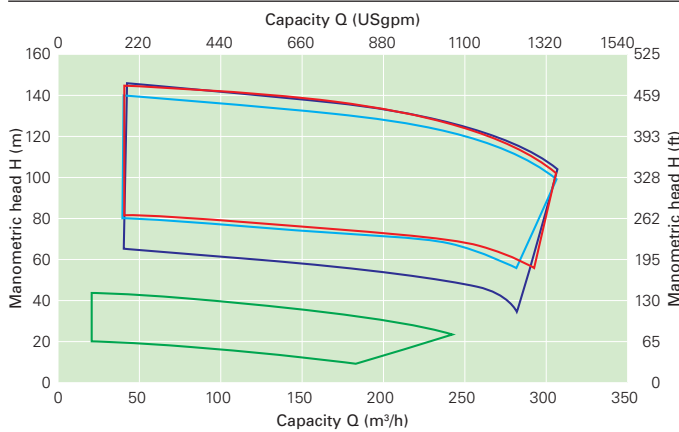
For changing conditions of use



Technical Data



Pressure- and capacity ranges



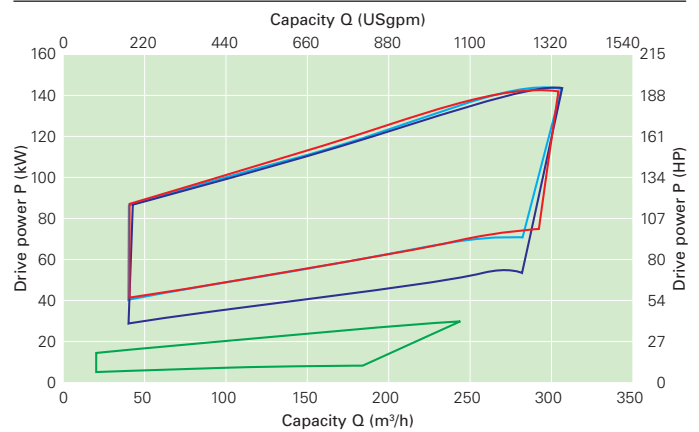
■ SX 1000 ■ SX 2000 ■ SX 2600 ■ SX 2600/1450

The performances of all SX pumps are in principle identical. They are based on the maximum nominal speed of impeller of 2600 rpm, however, with different driving- / and input speeds of up to 1000, 2000 or 2600 rpm

Pump configuration according to data sheet curves

Your dealer:

Power- and capacity ranges



All values apply to water with an 8" intake line.

Röhren- und Pumpenwerk BAUER GmbH

8570 Voitsberg, Austria

Phone +43 3142 200-0

Fax +43 3142 200-320 / -340

sales@bauer-at.com

www.bauer-at.com

A **BAUER Group** company

