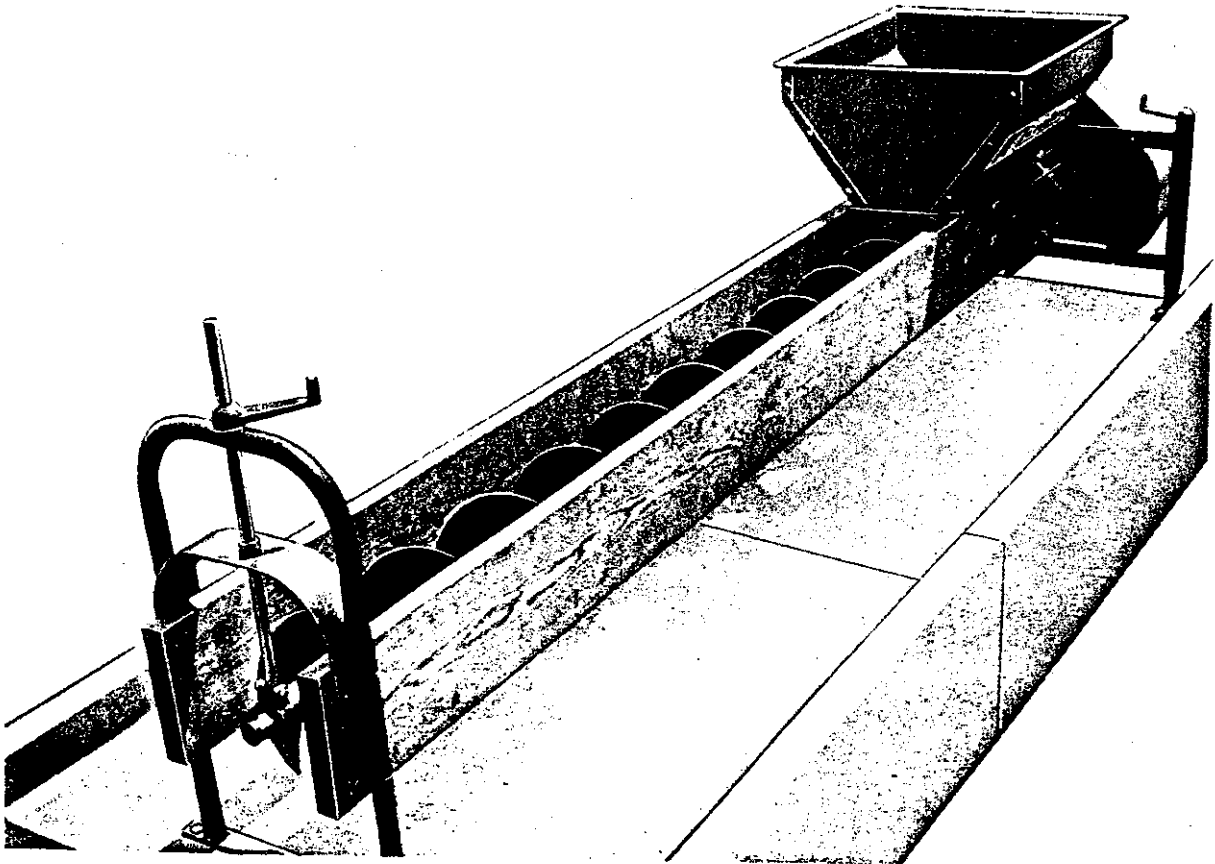




AUGER FEEDERS & CONVEYORS

OPERATORS MANUAL

MODELS FB7750 & CU7750



a division of
A. F. KLINZING CO., INC.
N6989 Rolling Meadows Drive
P. O. Box 29
Fond du Lac, WI 54936-0029

OPERATING INSTRUCTIONS

The basic principle of operation for the open auger feeder is that the silage is carried by the auger between the two planks and dropped down on to the bunk. If more silage is desired on the bunk, raise the entire feeder higher from the bunk as shown in Figure G, item 7, and Figure M, item 3. If less silage is desired on the bunk, lower these various adjustments bringing the auger and planks down closer to the bunk.

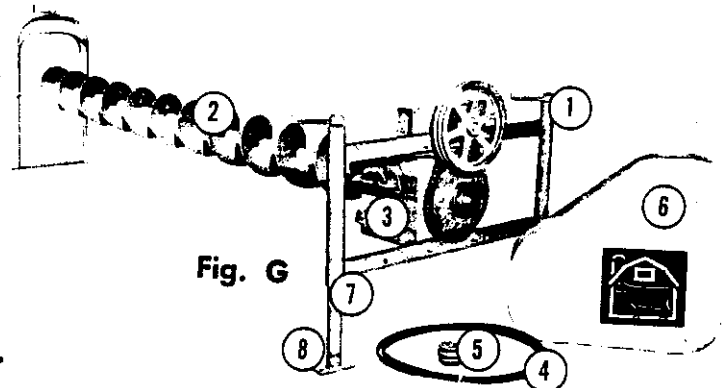
LUBRICATION

All of the bearings on the transmission assembly are sealed and permanently lubricated requiring no further lubrication. The bearing on the suspended bearing stand, Figure M, item 1, should be adequately greased once each month. Grease the motor, if fittings are present, with only one shot of grease per fitting once each year.

CAUTION

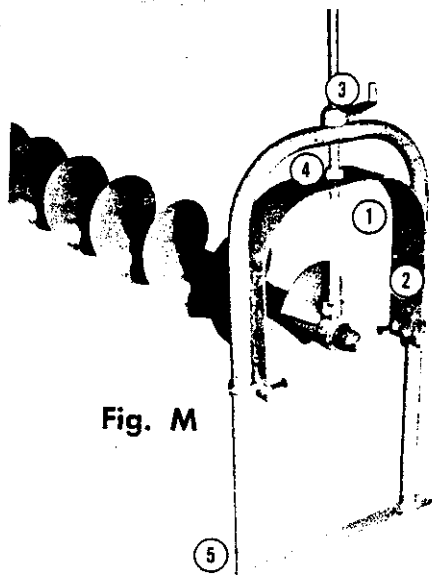
1. Be sure the safety guard is securely in place covering the belts and chain on the transmission assembly.
2. Be cautious of children or adults on the bunk when auger is turning. Children should be kept off the bunk at all times. Auger covers must be installed!! Use lag bolts or double headed nails!

1 & 2 Picture of transmission unit with safety shield removed. Attach the auger length to the transmission unit with the bolt provided. The auger should be centered over the bunk. The end of the auger with the rounded flighting is the pick-up end and should be turned in the direction from which the silage is coming. The end of the auger with the square flighting is the discharge end and should always point away from the source of the silage.



3. Mount the motor to the transmission unit with the bolts provided in the motor base.
4. Connect the motor to the speed reduction unit with the two V belts provided.
5. Attach the motor pulley to the motor with the key furnished with the motor.
6. Be sure the belt safety guard is installed in place with the J bolts.
7. Assemble the adjustable transmission stand as shown.
8. Securely anchor, with lag screws or concrete anchors, the transmission stand to the bunk.

1. Assemble the suspended bearing stand as shown. Note the square flighting on the discharge end of the auger. Couple the augers together with the stub shaft and spring steel roll pins provided. Be sure there is some lag (approximately 180°) in the rotation from the end of one flighting to the beginning of the next to avoid binding of silage in the bearing hanger.

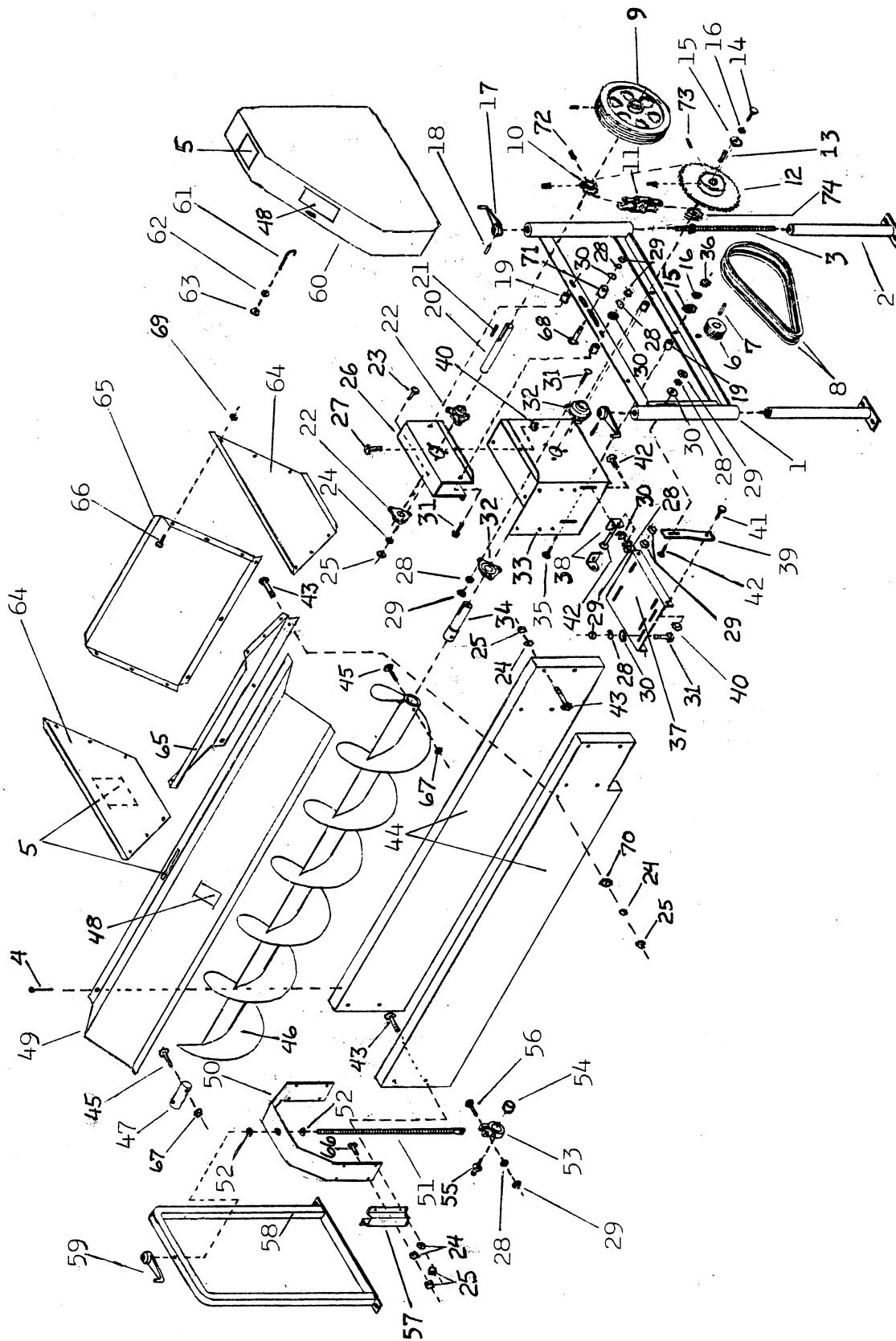


2. Bolt 2" x 10" planks, (or you may use 2" x 12" planks) one on each side of the auger, to the bearing stand at this point. These planks are also to be bolted to the transmission stand.

3. This adjustment raises and lowers the auger and the planks.

4. Set this vertical adjustment so that the bottom of the auger flighting is 2" below the bottom of the 2" x 10" planks.

5. Anchor firmly the suspended bearing stand with lag screws or concrete anchors.



STANDARD 12" PLANK-SIDE AUGER FEEDER

| Ref. | Part No. | Description | FB7712 | FB7715 | FB7750 | F77200 | F78200 |
|------|----------|---------------------------------------|----------|----------|--------|--------|--------|
| | | | 12' Ext | 6' Ext | Drive | Arch | Hopper |
| 1 | F57590 | Drive Frame Stand | | | | 1 | |
| 2 | F57610 | Extension Leg, 18" | | | | 2 | |
| 2 | F57530 | Extension Leg, 36" | | | | 2 | |
| 2 | F57640 | Extension Leg, 48" | | | | 2 | |
| 3 | F57670 | Adjustment Rod Assy. | | | | 2 | |
| 4 | ***** | Fasteners (by Customer) | as req'd | as req'd | | | |
| 5 | X23001 | Warning Decal '5-Points' | | | | 1 | |
| 6 | B92320 | Motor Pulley, 2B3 x 7/8" Bore | | | | 1 | |
| 6 | B92330 | Motor Pulley, 2B3 x 1-1/8" Bore | | | | 1 | |
| 7 | X21280 | Key, 3/16 x 2-1/2" | | | | 1 | |
| 7 | X21330 | Key, 1/4 x 2-1/2" | | | | 1 | |
| 8 | X22909 | V-Belt, B50 (matched) | | | | 2 | |
| 8 | X22910 | V-Belt, B55 (matched) | | | | 2 | |
| 9 | F57850 | Idler Pulley, 1" Bore | | | | 1 | |
| 10 | F57011 | Idler Sprocket, 1" Bore | | | | 1 | |
| 11 | F57043 | Drive Chain w/Connector & 1/2 Link | | | | 1 | |
| 12 | F57042 | Drive Sprocket, 1-1/4" Bore | | | | 1 | |
| 13 | X21380 | Key, 5/16 x 1-1/2" | | | | 1 | |
| 14 | X19470 | HHC Screw, 1/2 x 3/4" | | | | 1 | |
| 15 | X20190 | Flat Washer, 1/2" | | | | 3 | |
| 16 | X20250 | Lock Washer, 1/2" | | | | 3 | |
| 17 | F58020 | Crank Handle, Drive Frame (5/8" Bore) | | | | 2 | |
| 18 | X20760 | Spiral Pin, 3/16 x 1-3/4" | | | | 2 | |
| 19 | F57750 | Spacer | | | | 4 | |
| 20 | F58820 | Idler Shaft, 1" | | | | 1 | |
| 21 | X21340 | Key, 1/4 x 3-1/4" | | | | 1 | |
| 22 | F58010 | Flange Bearing, 3B x 1" | | | | 2 | |
| 23 | X19000 | Carriage Bolt, 5/16 x 3/4" | | | | 6 | |
| 24 | X20220 | Lock Washer, 5/16" | | | | 18 | 6 |
| 25 | X19970 | Hex Nut, 5/16" | | | | 18 | 6 |
| 26 | F57680 | Transmission Channel Weldment | | | | 1 | |
| 27 | X19340 | HHC Screw, 3/8 x 3/4" | | | | 3 | |
| 28 | X20230 | Lock Washer, 3/8" | | | | 8 | 1 |
| 29 | X20230 | Hex Nut, 3/8" | | | | 8 | 1 |
| 30 | X20230 | Flat Washer, 3/8" | | | | 5 | |
| 31 | X19110 | Carriage Bolt, 3/8 x 1-3/4" | | | | 5 | |
| 32 | F57930 | Flange Bearing, 3B x 1-1/4" | | | | 2 | |
| 33 | F77320 | Thrust Plate Weldment | | | | 1 | |
| 34 | F58800 | Drive Shaft, 1-1/4" | | | | 1 | |
| 35 | X19520 | HHC Screw, 1/2 x 2" | | | | 2 | |
| 36 | X20040 | Hex Nut, 1/2" | | | | 2 | |
| 37 | F57481 | Base Plate, Motor | | | | 1 | |
| 38 | F57470 | Hinge, Base Plate | | | | 2 | |
| 39 | F57482 | Adjusting Bar, Motor Base Plate | | | | 1 | |
| 40 | X20002 | Flange-Lock Hex Nut, 3/8" | | | | 6 | |
| 41 | X19360 | HHC Screw, 3/8 x 1" | | | | 3 | |
| 42 | X19080 | Carriage Bolt, 3/8 x 1" | | | | 3 | |
| 43 | X19021 | Carriage Bolt, 5/16 x 2-1/2" | | | | 8 | 4 6 |

| Ref. | Part No. | Description | FB7712 | FB7715 | FB7750 | F77200 | F78200 |
|------|----------|---------------------------------------|---------|--------|--------|--------|--------|
| | | | 12' Ext | 6' Ext | Drive | Arch | Hopper |
| 44 | ***** | 2x10 Plank min. (by Customer) | 2 | 2 | | | |
| 45 | X19580 | HHC Screw, 1/2 x 3-3/4" | | | 1 | 1 | |
| 46 | F77770 | Auger, 6' | | 1 | | | |
| 46 | F77700 | Auger, 12' | 1 | | | | |
| 47 | F57840 | Connector Shaft, Type-A | | | | 1 | |
| 48 | X23003 | Warning Decal 'Lock Out Power' | 4 | 2 | | | |
| 49 | F77080 | Auger Cover, 6' | 2 | 1 | | | |
| 50 | F77220 | Inner Support Arch | | | | 1 | |
| 51 | F57220 | Hanger Bolt Weldment | | | | 1 | |
| 52 | X20110 | Hex Nut, 3/4" | | | | 2 | |
| 53 | F58240 | Hanger Bearing, Complete | | | | 1 | |
| 54 | F58240 | Fiber Bushing Insert | | | | 1 | |
| 55 | X20640 | Lube Fitting | | | | 1 | |
| 56 | X19390 | HHC Screw, 3/8 x 2" | | | | 1 | |
| 57 | F57390 | Support Guide Clamp | | | | 2 | |
| 58 | F77210 | Outer Support Frame, Hanger Arch | | | | 1 | |
| 59 | F58030 | Crank Handle, Hanger Arch (3/4" Thdd) | | | | 1 | |
| 60 | F57710 | Belt Cover | | 1 | | | |
| 61 | F57350 | J-Bolt | | 2 | | | |
| 62 | X20150 | Lock Washer, 1/4" | | 2 | | | |
| 63 | X19950 | Hex Nut, 1/4" | | 2 | | | |
| 64 | F77280 | Hopper End Panel | | | | | 2 |
| 65 | F58580 | Hopper Side Panel | | | | | 2 |
| 66 | X19910 | Truss head Screw, 5/16 x 3/4" | | | 4 | | 12 |
| 67 | X20050 | Top-Lock Hex Nut, 1/2" | | 1 | | 1 | |
| 68 | - | | | | | | |
| 69 | X19971 | Flange-Lock Hex Nut, 5/16" | | | | | 12 |
| 70 | MK0007 | Flat Washer, 5/16" | | | | | 6 |