



Agromatic INC



Rubber Flooring & Stall Mats



MADE IN GERMANY



brings the pasture indoors



Revision: 8101



Less

- - *slipping & falling injuries*
- - *claw damage*
- - *lameness*
- - *lying damage & joint injuries*
- - *noise & stress*
- - *veterinarian/hoof treatment costs*
- - *stock replacement costs*
- - *stall maintenance*

If flooring in barns were as soft as in nature, cows would be more comfortable and healthier. Cows use the barn surface 24 hours a day for lying, standing and walking.

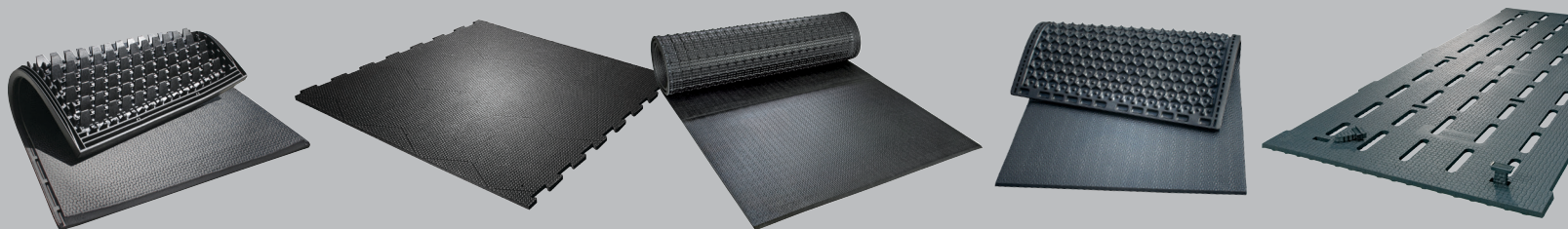
The cow needs animal-friendly lying and walking areas:

- permanently soft
- hygienic
- slip-resistant

= requirements for high productivity and longevity

KRAIBURG's solution:

Rubber coverings for every application in the barn, specifically developed for and optimally adapted to the particular demands of each area.



- easy installation
- long-lasting ideal softness
- sophisticated details
- dimensionally stable
- slip-resistant



More

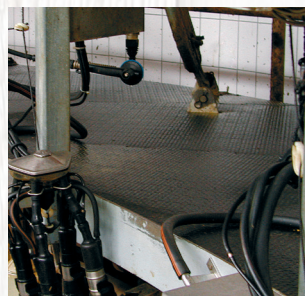
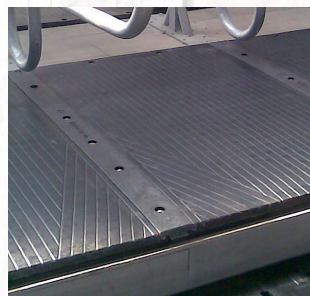
- ++ *comfort*
- ++ *mobility*
- ++ *milk yield*
- ++ *fertility*
- ++ *natural animal behavior*
- ++ *hygiene*
- ++ *thermal balance*
- ++ *healthy & happy cows*



Higher milk yield due to animal-friendly lying and walking areas



Source: Eelkema, W., Heikamp, R., Hopster, H., 2004





► **KRAIBURG's experience is your gain**

KRAIBURG - predominant in the rubber industry

KRAIBURG has established itself as an expert in the rubber business. The KRAIBURG Holding GmbH & Co. KG has a staff of more than 2,000 employees worldwide.



50 years of experience

Since 1968 KRAIBURG has been developing and manufacturing rubber mats for cow comfort in Tittmoning, Germany. Today about 200 employees exclusively concentrate on that.

High quality rubber materials

Rubber mats are subject to extremely high stress in agriculture. KRAIBURG has been manufacturing high-quality rubber mixtures with a unique process for 50 years. Experience will tell you that not all rubber mats are the same.



Certified quality – made in Germany

KRAIBURG's goal is to achieve more than just fulfilling general legal requirements, but furthermore apply environmentally friendly manufacturing processes.



To ensure quality consistently, KRAIBURG is certified with the worldwide ISO 9001 standard.

KRAIBURG's effective energy management system is specifically certified with ISO 50001.



Besides excellent manufacturing quality, product quality plays a decisive role. KRAIBURG operates an in-house laboratory and test the properties of products there. For independent attestation KRAIBURG also have them tested by the DLG (results at www.dlg.org).



Moreover, the products (since 2012) have been licensed by the Austrian specialist department for animal-friendly husbandry and animal protection.



Introduction

Cow Comfort - The key to your success!

▶ 2-3

About KRAIBURG

▶ 4

Lying areas

Overview of stall mats

▶ 6-7

Dairy Cows & Heifers

TARSA	★★★★★	▶ 8
KEW Plus	★★★★★	▶ 9
WINGFLEX	★★★★★	▶ 10
WELA LongLine	★★★★★	▶ 11
Soft Bed LongLine	★★★	▶ 12
KKM / KKM Puzzle / KKM LongLine	★★★	▶ 13
KIM / KIM Puzzle / KIM LongLine	★★★	▶ 14
CALMA	★★	▶ 15

Deep Bedded Systems

maxiBOX	elevated deep bedded comfort	▶ 16
POLSTA	deep bedded stall cushion	▶ 17

Brisket Boards

ergoBOARD / maxiBOARD	brisket boards	▶ 18
-----------------------	----------------	------

Walking & milking area

Overview of flooring		▶ 22-23
profiKURA	mildly abrasive for all areas	▶ 24
KURA / Cirrus	improves footing, ideal softness	▶ 25
KARERA	blue collar quality	▶ 26

Specialty areas

pediKURA® / pediCIRRUS	select abrasion zones	▶ 27
MONTA	for inclined areas stalls	▶ 28
LOMAX	perforated flooring	▶ 29
VITA	calving pens and box stalls	▶ 30
SIESTA	calving pens and box stalls	▶ 31

General

General product data: warranty, installation, tolerances

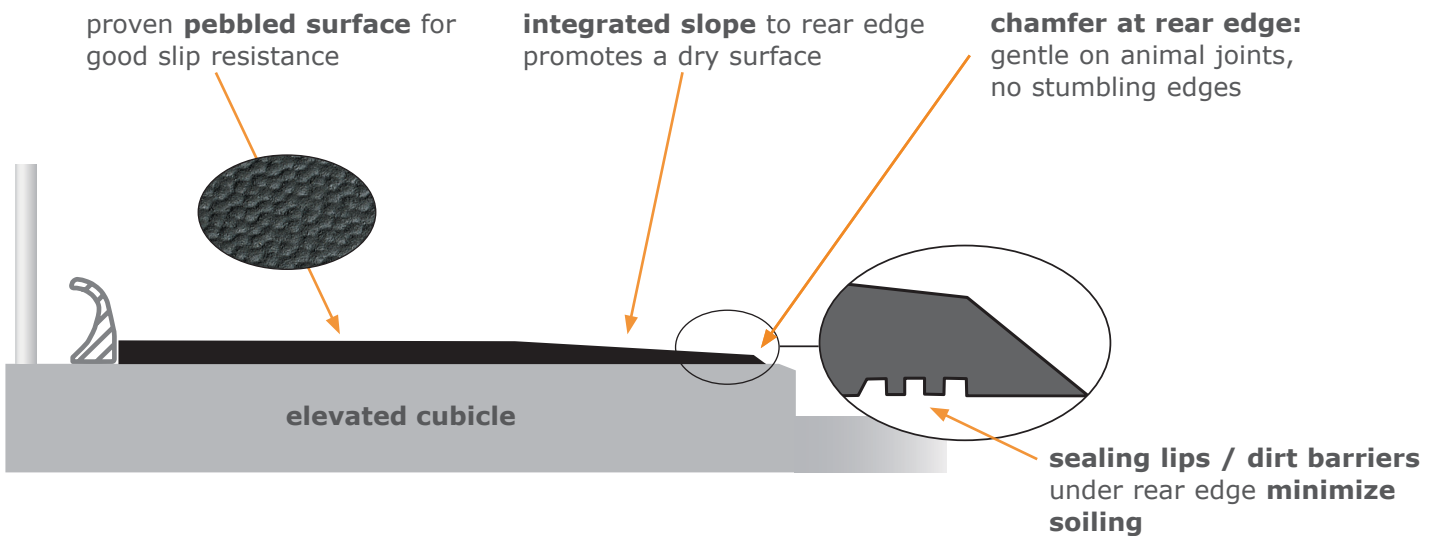
▶ 33



TARSA	KEW Plus	WINGFLEX	WELA LongLine	Soft Bed LongLine
free stalls	free stalls & tie stalls	free stalls	free stalls	free stalls
★★★★★	★★★★★	★★★★★	★★★★★	★★★
comfort zones	3-functional layers	wing-profile	blade-profile	continuous layers
2-1/2"	2-1/2"	2-1/2"	2"	1-9/16" or 2-9/16"
► Page 8	► Page 9	► Page 10	► Page 11	► Page 12

KRAIBURG stall mats - advantages at a glance

■ many **additional functions:**





NEW

KKM KKM Puzzle KKM LongLine	KIM KIM Puzzle KIM LongLine	CALMA	maxiBOX	POLSTA
				
free stalls & tie stalls	free stalls & tie stalls	free stalls & tie stalls	free stalls & tie stalls	free stalls
★★★★	★★★★☆	★★★		
honeycomb profile	air cushion profile	air cushion profile	deep bedded system	2-functional layers
1-1/4"	1-1/4"	1-1/4"	1-1/4"	4"
► Page 13	► Page 14	► Page 15	► Pages 16	► Page 17

■ **optimal resilience**

- **slip resistance** enhanced by grip created from foot depression

■ **outstanding rubber mixture**

- high quality – rugged and permanently soft

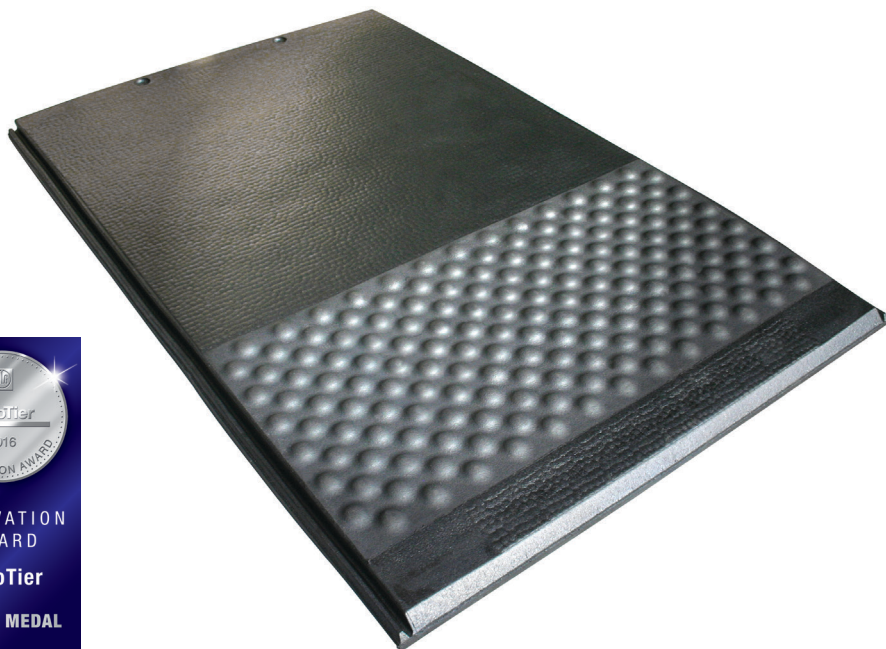
■ **minimal effort for maintenance**

■ **significant bedding savings**

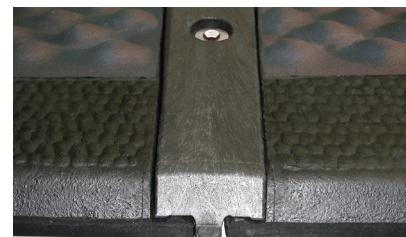
- some bedding is necessary to absorb moisture and increase cow comfort

► **The best places are always occupied.**



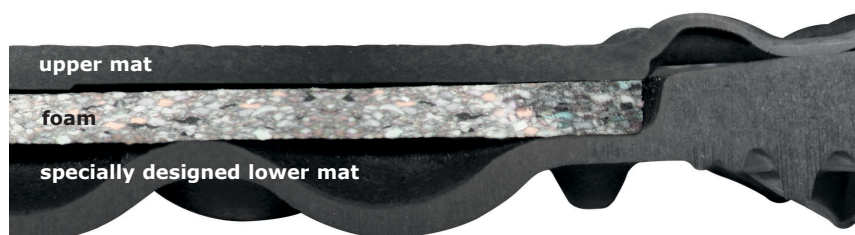
**TARSA**

bubble surface allows better air circulation to keep skin drier



connector bar engages flush with the mat surface and countersinks into the edge making installation easy

- combines features from Kraiburg's proven KEW Plus mat and the newest Tarsal zone technology
 - ▶ front portion is designed with 3-layer structure
 - ▶ back portion has specially designed tarsal zone
- specially designed "bubble" surface that allows better air circulation to keep skin drier
- designed for premium cow comfort

**System dimensions:**

thickness: approx. 2-1/2"	width: adjustable with connector bar	mat width:	44"	44"	44"	44"	length: 72"
		connector bar width:	3-1/2"	5-1/2"	7-1/2"	9-1/2"	
		stall width:	47-1/2"	49-1/2"	51-1/2"	53-1/2"	

Installation*: 2 anchors & washers per mat
5 anchors per connector bar*

Accessories:

Termination Bar - side closure at end of row, **width:** 2-1/2", **length:** 72"

ergoBOARD or maxiBOARD (with 1" thick spacing board for correct height) - brisket board (see page 18)

*Please take notice of the corresponding KRAIBURG specifications and installation instructions with useful advice and tips. You will obtain these at your local Agromatic dealer or at www.agromatic.net.

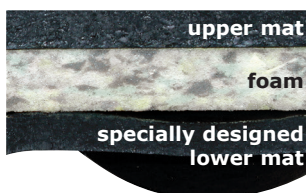


KEW Plus ★★★★★

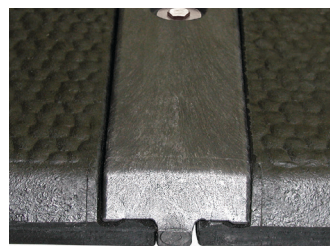
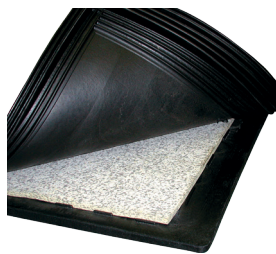


the benchmark for
excellent
lying comfort for
more than ten years

- three functional layers ensure optimal and permanent softness for every load condition
- soft lying area within the mat edges supports the correct resting position of the cow and improves slip resistance
- comfortable and elastic surface
- sealing lips completely surround the foam inlay and the lower mat
 - ▶ the foam is protected



3 functional layers:
2-1/2" of lying comfort



connector bar engages
flush with the mat surface and
countersinks into the edge making
installation easy

System dimensions:

thickness: approx. 2-1/2"	width: adjustable with connector bar	mat width:	42"	44"	44"	44"	44"	length:
		connector bar width:	3-1/2"	3-1/2"	5-1/2"	7-1/2"	9-1/2"	66-1/2"
								72"
		stall width:	45-1/2"	47-1/2"	49-1/2"	51-1/2"	53-1/2"	

Installation*: 2 anchors & washers per mat
5 anchors per connector bar*

Accessories:

Termination Bar - side closure at end of row, **width:** 2-1/2", **length:** 72"

ergoBOARD or maxiBOARD (with 1" thick spacing board for correct height) - brisket board (see page 18)

*Please take notice of the corresponding KRAIBURG specifications and installation instructions with useful advice and tips.
You will obtain these at your local Agromatic dealer or at www.agromatic.net.

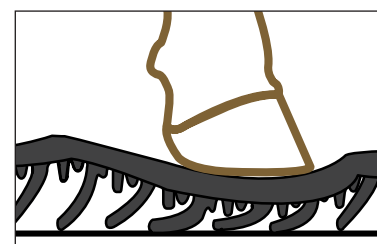


WINGFLEX ★★★★★

excellent
cost-comfort ratio

WINGFLEX adapts to the lying cow

- stable wing profile creates excellent permanent softness and durability
 - ▶ adapts optimally to body shape
- soft lying area within the mat edges supports the correct resting position of the cow and improves slip resistance
- comfortable and skin-friendly elastic surface



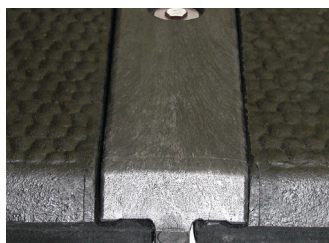
supporting studs have a cushioning effect with concentrating loads (when the cow gets up or lies down)



a profile element (wing + supporting studs):
extremely stable, wear resistant and flexible



sealing lips on lower side prevent dirt and bedding from getting underneath



connector bar engages flush with the mat surface and countersinks into the edge making installation easy

System dimensions:

thickness: approx. 2-1/2"	width: adjustable with connector bar	mat width:	40"	40"	44"	44"	44"	44"	length: 72"
			+ 3-1/2"	+ 5-1/2"	+ 3-1/2"	+ 5-1/2"	+ 7-1/2"	+ 9-1/2"	
		connector bar width:							
		stall width:	43-1/2"	45-1/2"	47-1/2"	49-1/2"	51-1/2"	53-1/2"	

Installation*: 2 anchors & washers per mat
5 anchors per connector bar*

Accessories:

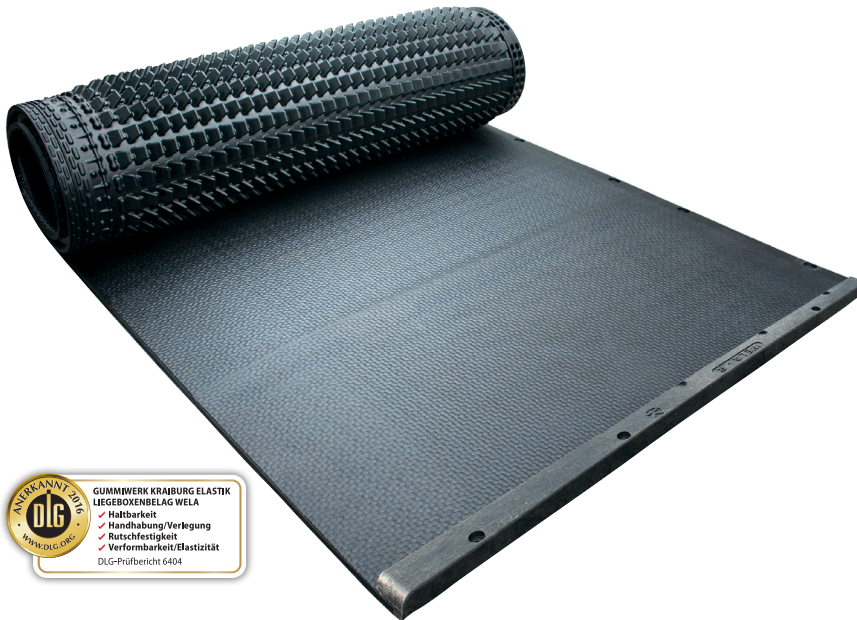
Termination Bar - side closure at end of row, **width:** 2-1/2", **length:** 72"

ergoBOARD or maxiBOARD - (with 1" thick spacing board for correct height) - brisket board (see page 18)

*Please take notice of the corresponding KRAIBURG specifications and installation instructions with useful advice and tips. You will obtain these at your local Agromatic dealer or at www.agromatic.net.



WELA LongLine ★★★★★



- blade profile provides permanent softness and durability
► adapts to body shape
- proven pebbled surface
- integrated soft slope to rear edge promotes dry surface
- prefabricated anchor points make installation easy - anchor is countersunk



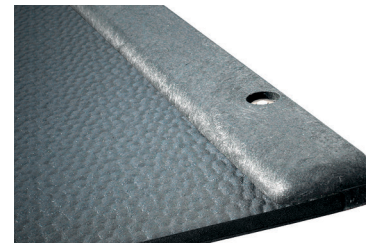
left - left WELA termination bar
center - WELA connector bar
right - right WELA termination bar



lower side profile with **blades and supporting studs**; stable and flexible



sealing lips in the rear edge minimize soiling underneath the mat



right WELA termination bar

Dimensions:

thickness: 2" **roll length:** 64' **roll width:** 72"

Right WELA Termination Bar (to end/begin roll) - width: 3-1/2", length: 72"

Left WELA Termination Bar (to end/begin roll) - width: 3-1/2", length: 72"

WELA Connector Bar (to connect 2 rolls) - width: 5-1/8", length: 72"

Installation*: 64 threaded LDT anchors & washers per roll
8 anchors per connector bar
6 anchors per termination bar

Accessories:
ergoBOARD or maxiBOARD - brisket board (see page 18)

Important Notes:

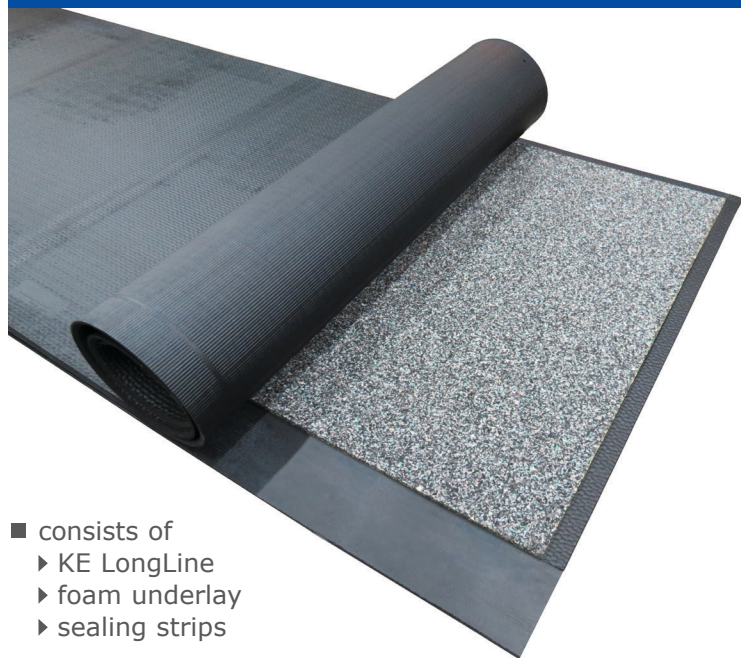
Stall bed must be at least 2" deeper than roll width.

Must use recommended anchors and washers to be eligible for published warranty.

*Please take notice of the corresponding KRAIBURG specifications and installation instructions with useful advice and tips. You will obtain these at your local Agromatic dealer or at www.agromatic.net.



Soft Bed LongLine ★★ ★



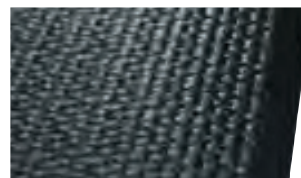
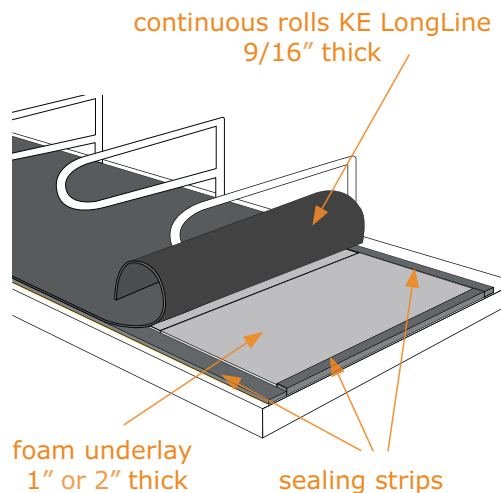
- consists of
 - ▶ KE LongLine
 - ▶ foam underlay
 - ▶ sealing strips
- chamfer at rear edge - gentle on animal joints, no stumbling edge
- recommended for suspended stalls only

Dimensions:

thickness: 1-9/16" or 2-9/16" **roll length:** 86' 1" **roll width:** 71"

Installation*: 130 anchors & washers per roll

Accessories: ergoBOARD or maxiBOARD - brisket board (see page 18)



Chamfer at rear edge

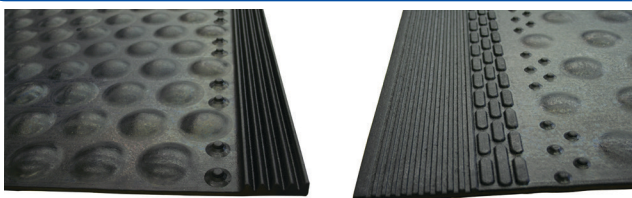
UniCUP for Soft Bed LongLine



- soft cup-formed underlay for Soft Bed LongLine (as an alternative to foam)
- integrated slope to rear edge promotes cleanliness
- robust and easy to clean

Dimensions:

thickness: 1" **length:** 71" **width:** 47-1/4"



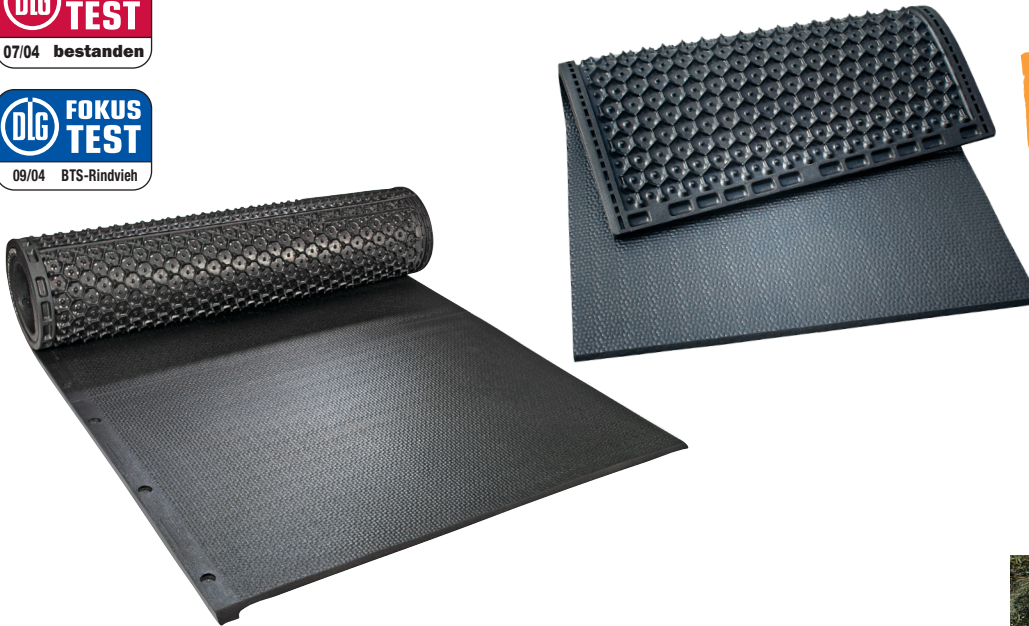
For maximum softness combine foam and UniCUP to make 3 layers.



*Please take notice of the corresponding KRAIBURG specifications and installation instructions with useful advice and tips. You will obtain these at your local Agromatic dealer or at www.agromatic.net.



KKM / KKM Puzzle / KKM LongLine ★ ★ ★



the cozy mat classic
since 2002

- highly wear resistant honeycomb texture creates excellent and permanent lying comfort
- proven pebbled surface
- KKM LongLine: rolls for suspended stalls only

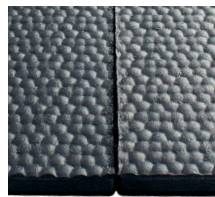


the **sealing lips** have proven themselves in practice



sealing lips on lower side minimize soiling underneath mat

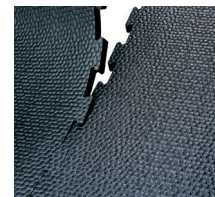
options:



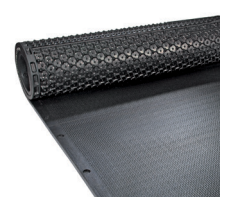
with straight edges



with Poly-T-Bar
e.g. for stalls with cemented in dividers or when using very fine bedding



with interlocking puzzle edges



KKM LongLine
as continuous system

Dimensions:

thickness: 1-1/4"

KKM (straight edges):

width: 43-1/4 / 45-1/4 / 47-1/4 / 49-1/4
length: 67 / 72"

KKM Puzzle:

width: 43-1/4 / 47-3/4
length: 67 / 72"

KKM LongLine:

roll length: 65-1/2'
roll width: 67 / 72"
(other lengths available as a special order)

Installation*: 3 anchors & washers per mat
48 anchors & washers per roll

Accessories:

Poly-T-Bar for covering joint widths of 1-1/2" to 3-1/2" or for closure at side edges, **length:** 65"

installation: 5 anchors per Poly-T-Bar*

ergoBOARD or maxiBOARD - brisket board (see page 18)

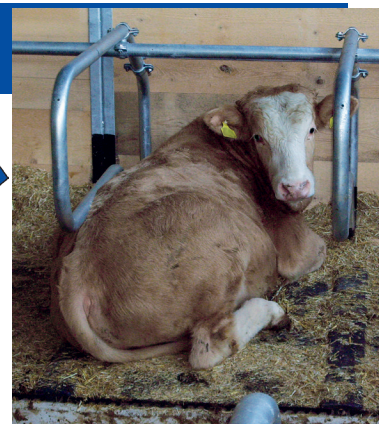
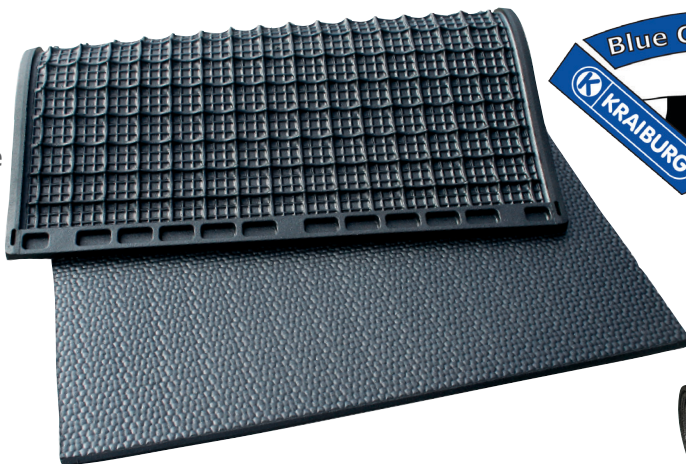
*Please take notice of the corresponding KRAIBURG specifications and installation instructions with useful advice and tips. You will obtain these at your local Agromatic dealer or at www.agromatic.net.



KIM / KIM Puzzle / KIM LongLine ★ ★ ★



KIM LongLine

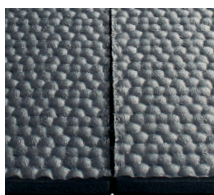


- soft, highly wear resistant air cushion profile creates pleasant and permanent lying comfort
- proven pebbled surface
- KIM LongLine: rolls for suspended stalls only

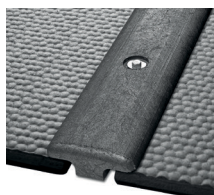


sealing lips on lower side minimize soiling underneath mat

options:



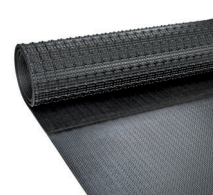
with straight edges



with Poly-T-Bar
e.g. for stalls with cemented in dividers or when using very fine bedding



with interlocking puzzle edges



KIM LongLine as continuous system

Dimensions:

thickness: 1-1/4"

KIM (straight edges):

width:

43-1/4 / 45-1/4 / 47-1/4 / 49-1/4"

length:

67"

KIM Puzzle:

width:

43-1/4 / 47-3/4"

length:

67"

KIM LongLine:

roll length:

86' 1"

roll width:

63"

(72" straight edge and puzzle cut KIM mats available by special order, call for details)

Installation*: 3 anchors & washers per mat
65 anchors & washers per roll

Accessories:

Poly-T-Bar for covering joint widths of 1-1/2" to 3-1/2" or for closure at side edges, **length:** 65"

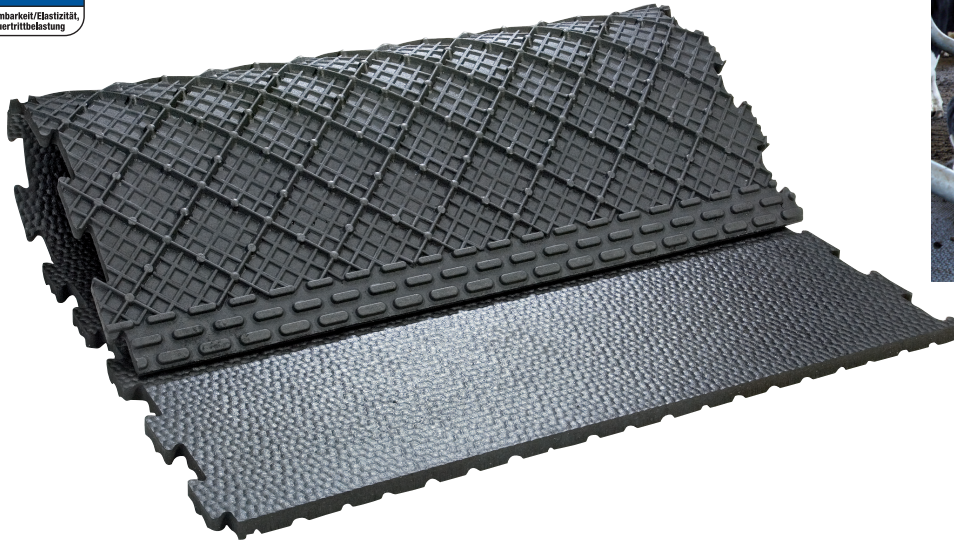
installation: 5 anchors per Poly-T-Bar*

ergoBOARD or maxiBOARD - brisket board (see page 18)

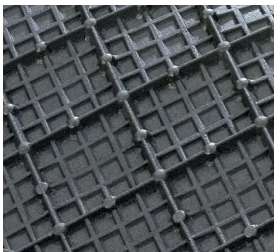
*Please take notice of the corresponding KRAIBURG specifications and installation instructions with useful advice and tips. You will obtain these at your local Agromatic dealer or at www.agromatic.net.



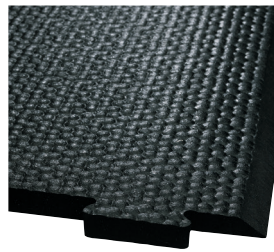
CALMA ★ ★



- pleasant and permanent softness through air-cushion-like lower side profile
- puzzle connection practically ensures a seamless stall bed area
- sealing lips reduce soiling underneath the mat

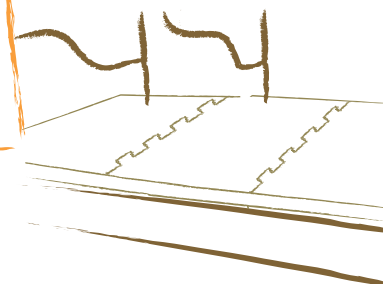


air-cushion-like lower profile:
soft and sturdy



chamfer at rear edge

Installation as a continuous system – independent of divider arrangement!



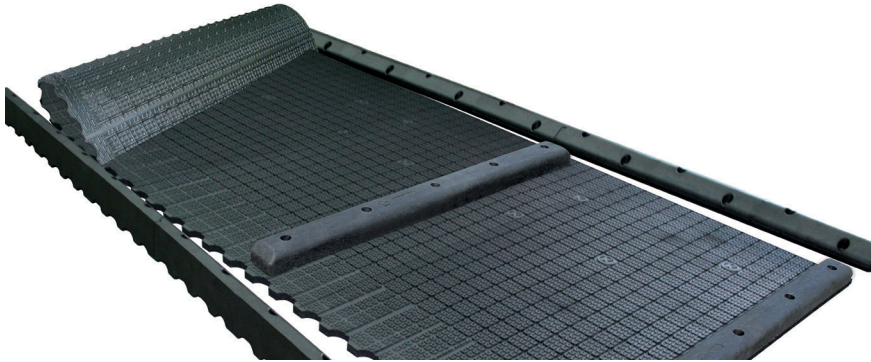
Dimensions:

thickness: 1-1/4" **width:** 45-1/4" **length:** 67" (smaller sizes available as special order)

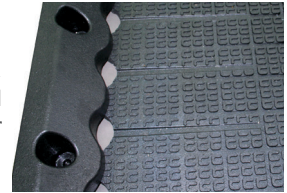
Installation*: 3 anchors & washers per mat

Accessory:
ergoBOARD or maxiBOARD - brisket board (see page 18)

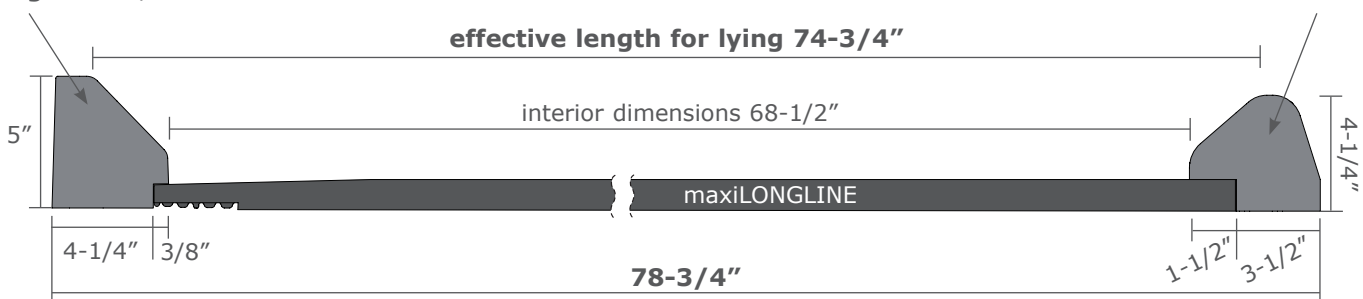
*Please take notice of the corresponding KRAIBURG specifications and installation instructions with useful advice and tips. You will obtain these at your local Agromatic dealer or at www.agromatic.net.

**maxiBOX****4-component system**

- consisting of rubber cover (roll) + rubber profile at rear curb + rubber brisket board + optional profile at side
- consistent lying comfort
- recommended bedding depth: 1-1/4" to 2"

air cushion profile on lower side**surface profile****integrated slope, drainage grooves and openings at the rear****Requirements for the concrete surface (lying area):**

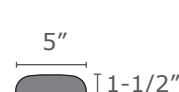
- ▶ at least a 3 % slope
- ▶ 4" high concrete stall platform

Dimensions:**maxiSTEP**
length: 68-3/4"**maxiBOARD**
length: 68-3/4"**maxiLONGLINE:**

thickness: 1-1/4" **roll length:** 65-1/2' roll **roll width:** 70-3/4"

Kit includes 1 roll of maxiLONGLINE, 12 maxiBOARDS, 12 maxiSTEPS, 168 anchors & washers

maxiPROFIL for the side lying area boundary on maxiLONGLINE, for closure at side edges, for covering joints:

length: 68-1/8"**maxiPROFIL XL:**
(special order)**maxiPROFIL:**
(optional)

Installation*: 7 anchors each for maxiBOARD and maxiSTEP, maxiLONGLINE is not fastened separately, 5 anchors per maxiPROFIL

*Please take notice of the corresponding KRAIBURG specifications and installation instructions with useful advice and tips. You will obtain these at your local Agromatic dealer or at www.agromatic.net.



NEW

POLSTA



► **4" thick "cushion" made of 2 functional layers**

- consisting of lower mat with blade profile + upper mat holds bedding in place while providing additional softness
- enhanced lying comfort
- recommended bedding depth: 1-1/4" to 2"



lower side profile with **blades and supporting studs**



fixations are countersunk into the edges



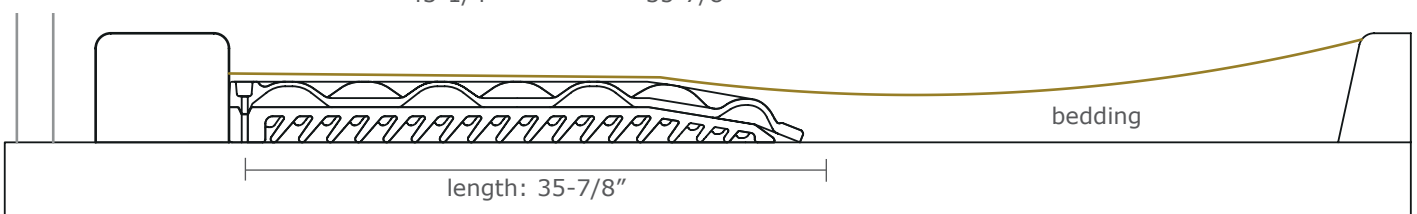
smooth transition from rubber to bedding

System dimensions:

thickness: 4"

width:
43-1/4"

length:
35-7/8"



Installation*: 9 threaded LDT anchors and washers / stall

*Please take notice of the corresponding KRAIBURG specifications and installation instructions with useful advice and tips. You will obtain these at your local Agromatic dealer or at www.agromatic.net.



ergoBOARD / maxiBOARD

ergoBOARD:



back side

research findings: **20% of the animals stretch out their foreleg in the pasture.** (Pelzer et al., 2007)

- Cows like to lie in this natural position in the barn, too.
The brisket board should make this possible with no hindrances.

► Brisket boards made of rubber

- animal-friendly, flexible and robust
- ideal to **complement** the stall's control devices
- can be used in combination with various stall mat systems
- retrofitting possible
- **ergoBOARD:**
 - works for every mat thickness
 - very elastic

maxiBOARD:



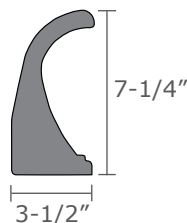
pleasantly soft contact area
allows natural lying positions with
foreleg stretched out

■ maxiBOARD:

- easy to put in bedding from the head space
- fits every stall width

Dimensions ergoBOARD:

length: 47-1/4"

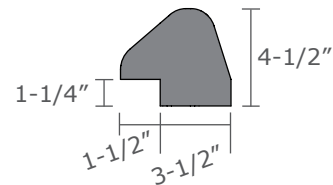


Installation*: 5 threaded LDT anchors & washers
per ergoBOARD

Attention: Use ONE ergoBOARD per stall, joints within the
stall are not advised.

Dimensions maxiBOARD:

length: 68-3/4"



Installation*: 7 threaded LDT anchors per maxiBOARD

Accessory:

Plastic board as shim for the maxiBOARD - for installation
on mats with a thickness of 1-3/4" or more

length: 79" - fastened at same time as maxiBOARD

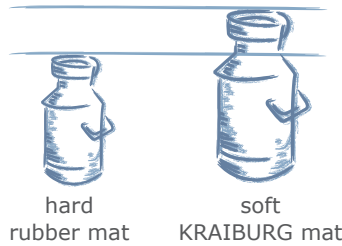




Economic efficiency

■ Higher milk yield on a soft KRAIBURG stall mats

Comparing
lying areas:



about 3.3 lbs
per cow per day
MORE MILK

hard
rubber mat soft
KRAIBURG mat

Source: LfL Sachsen, 1999

■ Low bedding requirements and minimal labor input for maintenance

Straw requirements per cow per year

Elevated stall with KRAIBURG mat: 88 lbs.
Deep-litter stall with straw: 572 lbs.

Labor requirements per cow per year

Elevated stall with KRAIBURG mat: 95 min.
Deep-litter stall with straw: 265 min.

Source: Heidenreich, 2007

Health

Interrelation between higher milk yield and health status with different housing systems

Risk for...	concrete	soft covers
udder diseases	↑	↓
teat lesions	↑	↓
early culling	↑	↓

soft stall mats result in higher milk yields
and reduce the risk of udder diseases, teat
lesions and early culling

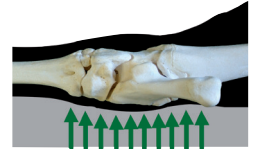
Source: Ruud et al., 2010

Anatomical background

hock joint on hard lying surface:
the weight burden on one spot
► disturbed blood flow, damage to
the roots of the hair and to the
skin

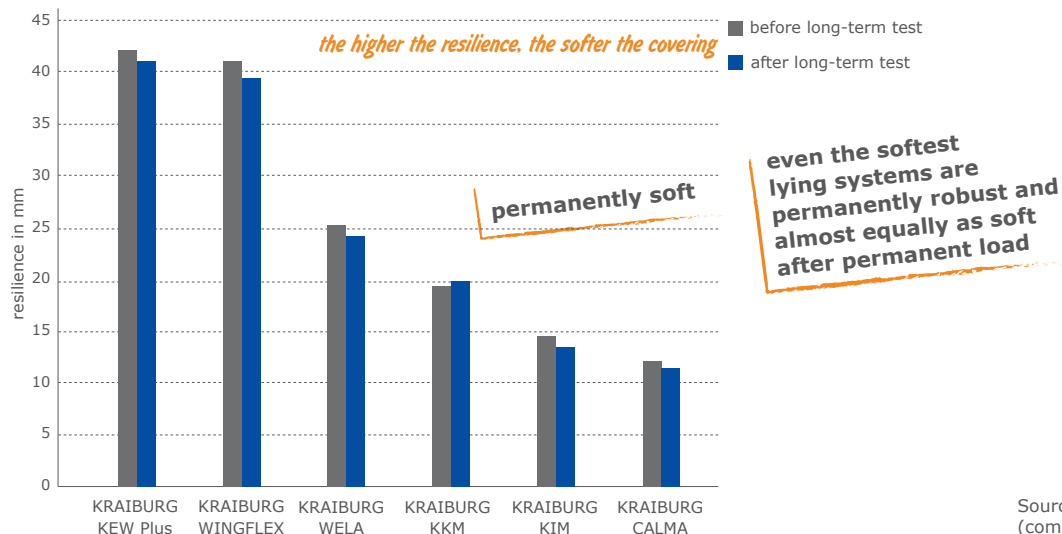


hock joint on soft lying surface:
the weight is distributed to a larger
surface
► healthier for joints



Softness & durability

Softness before and after long-term test

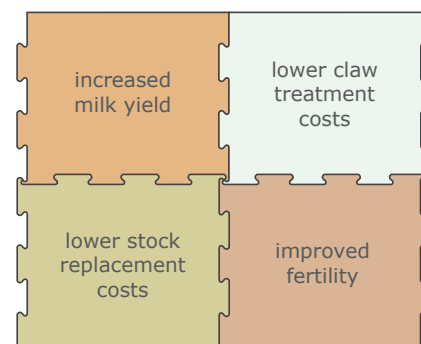


Source: KRAIBURG laboratory,
(compare it with DLG test reports - www.dlg.org)



KRAIBURG flooring

- ensure softness and improved slip resistance in the barn
- increase walking comfort
 - support claw health, well-being and mobility
 - promote feed intake and high yield
 - improve heat detection and increase reproduction rate
 - support longevity and reduce cull rate
- good hygiene
- help to reduce noise and stress
- faster milking through improved parlor entrance, exit and relaxed cows
- sturdy mats, permanently stable, long lasting
- puzzle compensates for natural thermal expansion, practically a seamless floor area
- simple and fast installation
 - easy-to-handle single mats
 - prefabricated fixing points ease installation
 - floor renovation in the parlor possible between milking times
- suitable for both new construction as well as remodels
- Cirrus products can be driven over with vehicles whose authorized tires do not exceed the recommended tire inflation pressure*:
 - radial tires: 56 PSI
 - diagonal tires: 42 PSI



the investment in animal-friendly walking areas pays off

▸ **Walking comfort like on pasture.**





Flooring with abrasive surface

Abrasive rubber floorings create optimal claw abrasion, very similar to conditions in nature, where sandy constituents in the soil ensure that claw formation and abrasion are kept balanced.

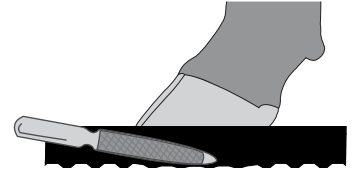
With profiKURA (or pediKURA®) the abrasive agent corundum and the special profiling integrated into the surface provide gentle claw abrasion.



natural ground is soft, sufficiently non-slippery and maintains the claws

Abrasive corundum

- the **second hardest mineral** after diamonds
- does not react with acids and bases: can be used in slurry environments
- patented technology which has been well-proven in the KRAIBURG-group for many years



Advice on claw trimming

To take full advantage of our product, please be aware of the following:

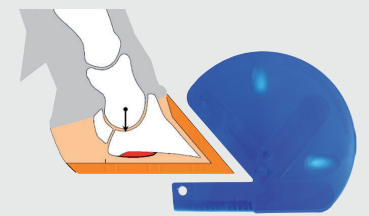
profiKURA (or pediKURA®) **maintains the claw form, but claw trimming is still necessary!**

- ▶ Hooves must still be trimmed regularly, but only for the purpose of claw care and less for position correction or complex treatment.

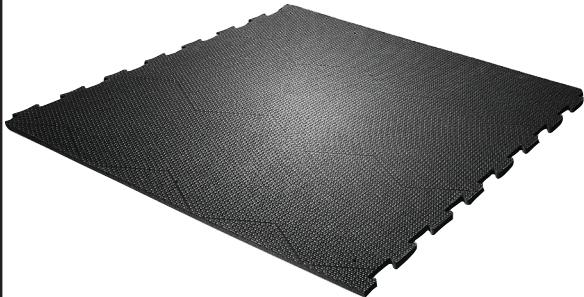
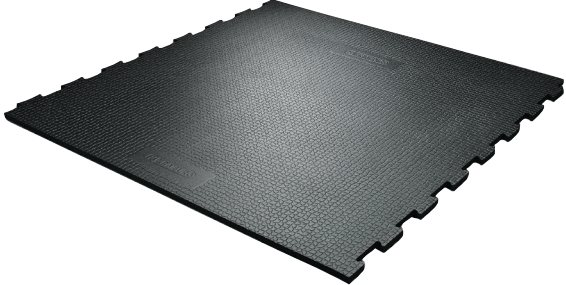


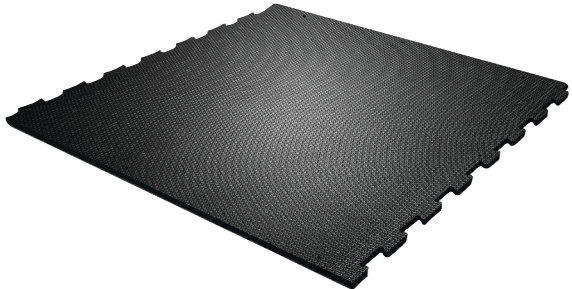
We recommend functional claw trimming **4 to 6 weeks before the mats are installed.**

Important: do not install the mats **at the same time you trim claws**, because the claw has to become accustomed to the abrasion.

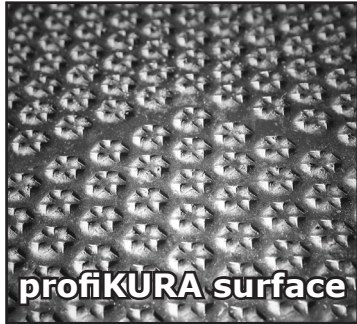
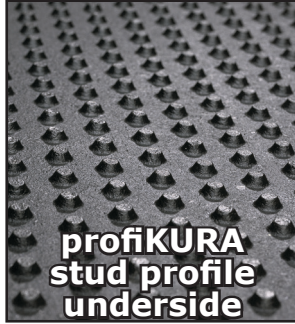







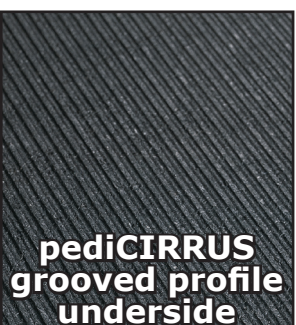
ideal claw form





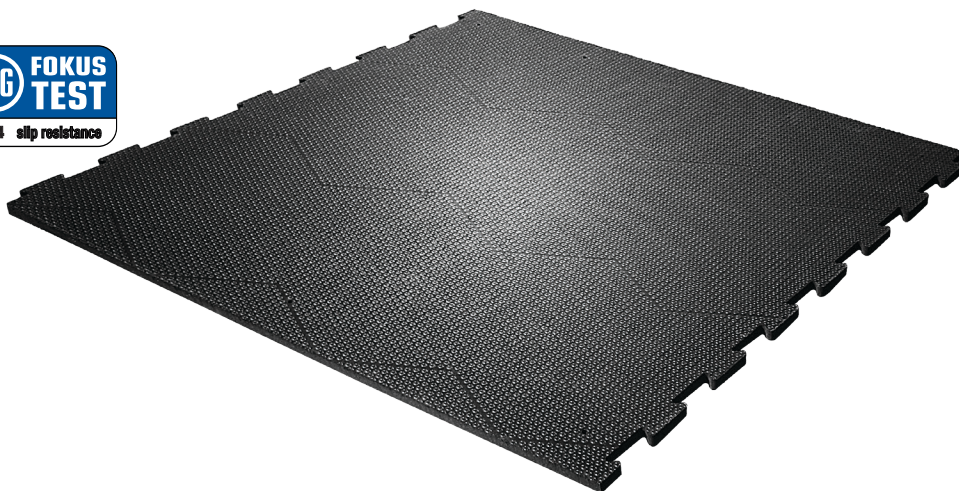
product	special features
<p>profiKURA</p> 	<p>All-in-one product - for all walking areas in the barn:</p> <ul style="list-style-type: none"> ■ animal-friendly softness ■ special surface ■ optimized claw abrasion (can be used in 100% of barn) <ul style="list-style-type: none"> ▶ through balanced content of abrasive agent in the surface
<p>KURA / Cirrus</p> 	<p>The proven "gold standard":</p> <ul style="list-style-type: none"> ■ animal-friendly softness and certified grip for concrete areas and slatted floors ■ the benchmark for excellent walking comfort for more than 15 years ■ if 100% of barn is covered with rubber, use pediKURA® abrasion zones
<p>KARERA</p> 	<p>Blue collar quality:</p>  <ul style="list-style-type: none"> ■ slip-resistant ■ simple and solid mat for alley, lanes and parlor decks
<p>pediKURA® / pediCIRRUS</p> 	<p>Can be combined with the proven KURA and Cirrus mats as a system: cover 20% of rubber surfaces</p> <ul style="list-style-type: none"> ■ animal-friendly softness ■ install in select abrasion zones (20% of total rubber surface) <ul style="list-style-type: none"> ▶ abrasive agent in the surface of "pedi" minimizes overgrowth of hooves



	surface	lower side		thickness	page
	 profiKURA surface	 profiKURA stud profile underside		profiKURA - 1"	24
	 KURA/Cirrus surface	 KURA stud profile underside	 Cirrus grooved profile underside	KURA - 1" Cirrus - 3/4"	25
	 KARERA surface	 KARERA multi-square underside		KARERA - 3/4"	26
	 pediKURA® surface	 pediKURA® stud profile underside	 pediCIRRUS grooved profile underside	pediKURA® - 1" pediCIRRUS - 3/4"	27

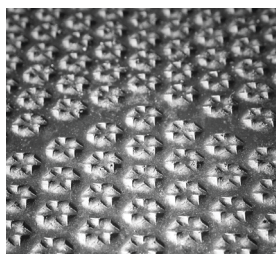


profiKURA

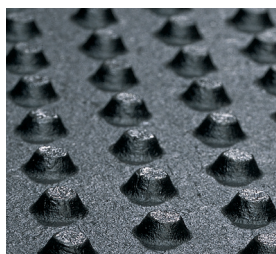


► All-in-one Mat: ideal softness, optiGrip surface and mild claw abrasion

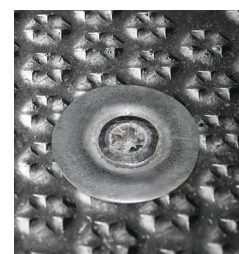
- special surface with incorporated abrasive corundum and star-shaped profiling
 - high slip resistance
 - specially designed to slowly wear off to expose the corundum stones
 - contributes to correct claw form through even abrasion on all walking areas in the barn



special surface



**profiKURA underside
stud profile** for ideal
softness



proven fastening system:
extremely sturdy, rounded off
and flush with the mat

Installation

- the **full benefits** from using this product (slip resistance + optimal claw abrasion) realized with **full coverage in all walking areas** in the barn
 - balanced content of abrasive agent in the surface

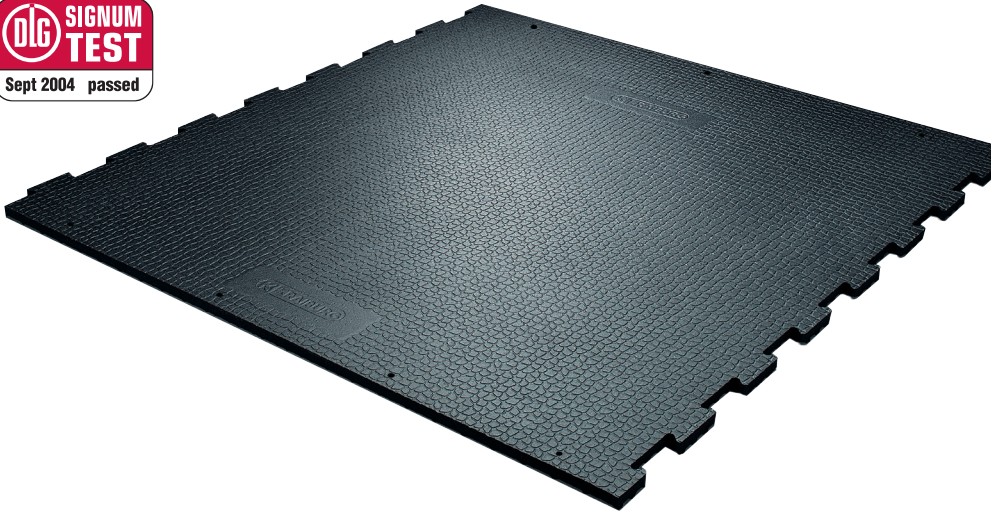
range of use:	lower side profile:	thickness:	width:	length:
concrete floor	studs (1/4")	1"	49-1/4"	60" / 67" / 73"

*Please take notice of the corresponding KRAIBURG specifications and installation instructions with useful advice and tips. You will obtain these at your local Agromatic dealer or at www.agromatic.net.



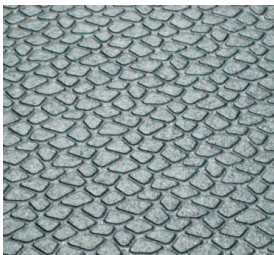
the benchmark for excellent walking comfort for more than fifteen years

KURA/Cirrus

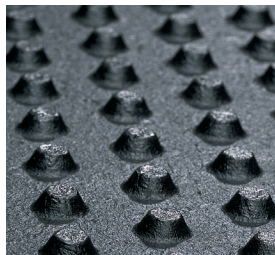


► **Hoof friendly and slip-resistant rubber flooring for concrete walking areas, parlors and lanes**

- improves claw health, productivity and longevity
- sturdy mats, permanently stable, long lasting
- puzzles allow for natural thermal expansion, practically seamless floor
- optional with pediKURA® or pediCIRRUS abrasion zones



grip-surface supports sure footing





KURA underside: stud profile for ideal softness



Cirrus underside: stable groove profile for high stress



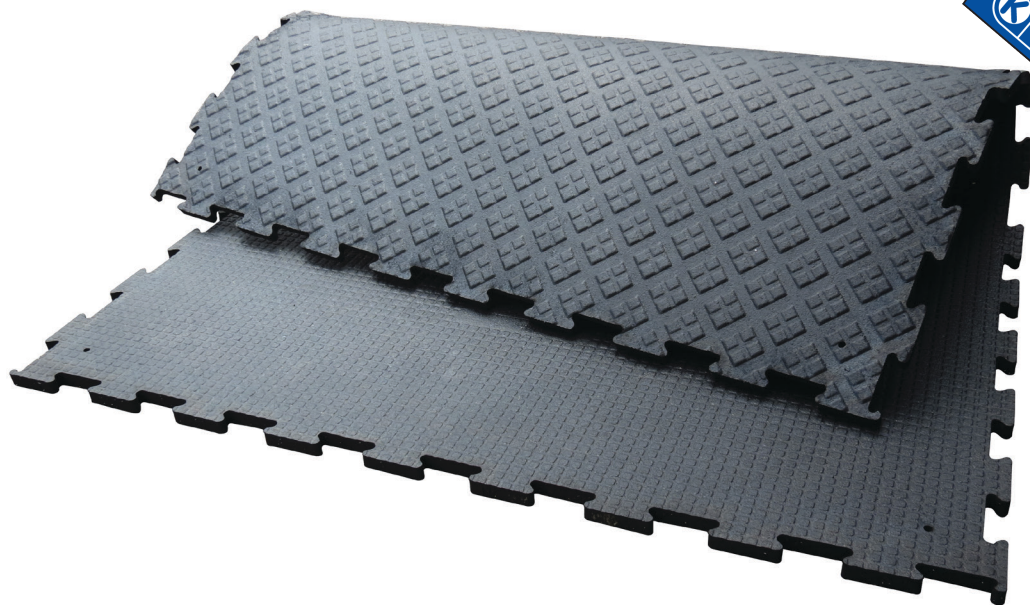
proven fastening system: extremely sturdy, rounded off and flush with the mat

	range of use:	lower side profile:	thickness:	mat width:	standard lengths:
KURA	walking areas in dairy barn, holding area, parlor, exit lanes, etc.	studs (1/4")	1"	49-1/4"	46-1/2"
		3/4"  1"			60"
Cirrus	walking areas in dairy barn with special stress (e.g. areas cleaned with tractor, cast slats, etc.)	grooves	3/4"		67"
		3/4" 			73-1/2"
					86-1/2"

*Please take notice of the corresponding KRAIBURG specifications and installation instructions with useful advice and tips. You will obtain these at your local Agromatic dealer or at www.agromatic.net.

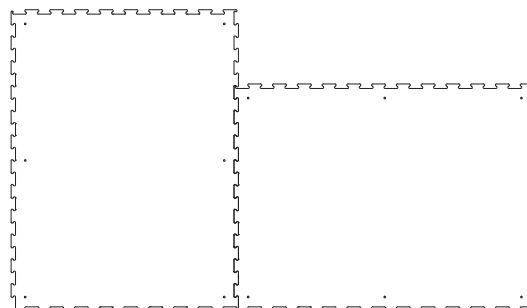


KARERA



► **Simple and solid mat for alleys, lanes and parlor decks**

- enhances animal health, productivity & longevity
- helps reduce stress and noise
- interlocks on 4 sides - vario style puzzles
 - sides can be puzzled to ends for more flexibility
 - can be trimmed to fit most situations



quad-surface improves
slip-resistance



lower side multi-square profile

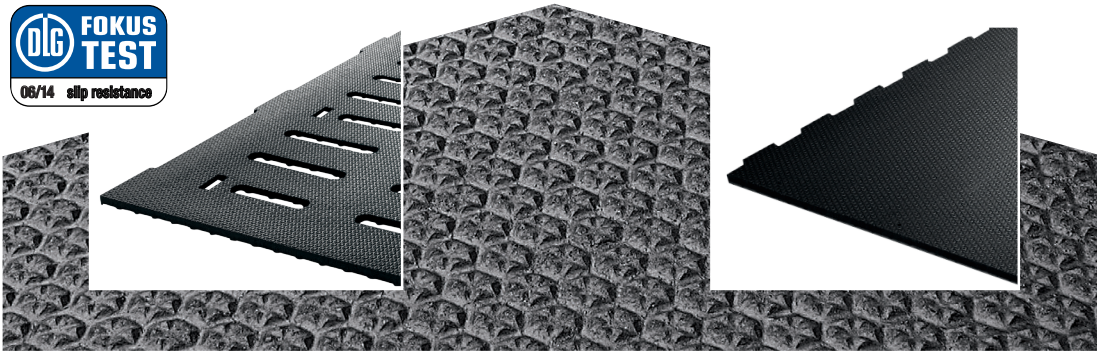


proven fastening system:
extremely sturdy, rounded off and
flush with the mat

range of use:	lower side profile:	thickness:	width:	length:
concrete floor	multi-square	3/4"	49-5/8"	66-1/8"

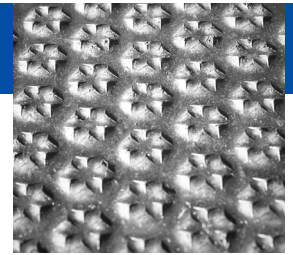


pediKURA® / pediCIRRUS system



► As a modular system can be combined with all KURA/Cirrus products

- supports the natural balance between claw formation and abrasion
 - contributes to correct claw form
 - abrasion is controllable
- retrofitting easily possible



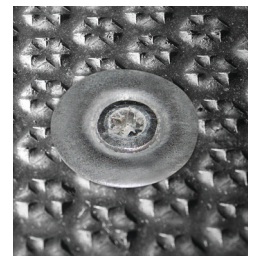
surface with corundum and special profiling



pediKURA® stud profile for ideal softness



pediCIRRUS groove profile for high stress

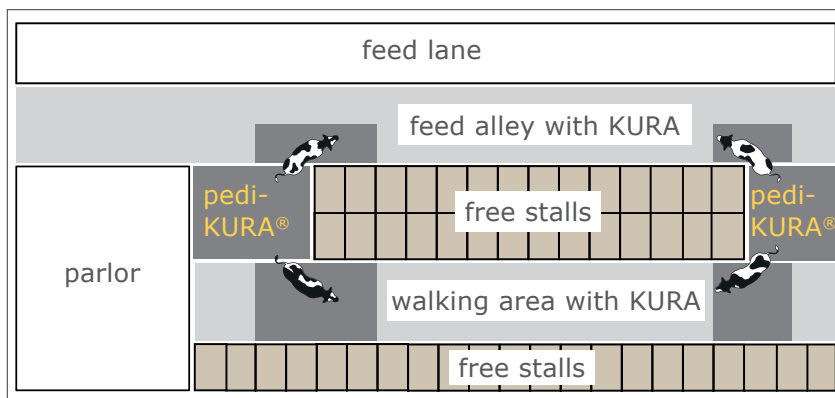


proven fastening system:
extremely sturdy, rounded off and flush with the mat

Installation

- 80% of the walking area is covered with the proven soft KRAIBURG KURA or Cirrus
- 20% of the walking area is covered with pediKURA®
 - concentrated content of abrasive agent in the surface
(installation predominantly in heavily frequented sections like crossovers, the areas around the drinking bowl or cow brush, the parlor entrance and exit, ...)

Example:



coverage of 20% pediKURA® in the barn: last claw trimming 4 months before

	range of use:	lower side profile:	thickness:	width:	length:
pediKURA®	concrete floor	studs (1/4")	1"	49-1/4"	67" / 73"
pediCIRRUS	concrete floor, for special stress	grooves	3/4"		

*Please take notice of the corresponding KRAIBURG specifications and installation instructions with useful advice and tips. You will obtain these at your local Agromatic dealer or at www.agromatic.net.



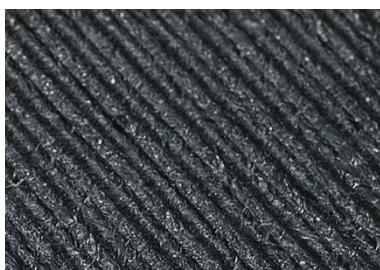
MONTA



- v-shaped, raised rib profile
 - ▶ minimizes slipping on steep slopes
 - ▶ facilitates drainage
- square profile between ribs for improved grip
- allows cows to easily navigate slopes in both directions
- tested on slopes up to 15% grade



rib profile minimizes slipping on steep slopes



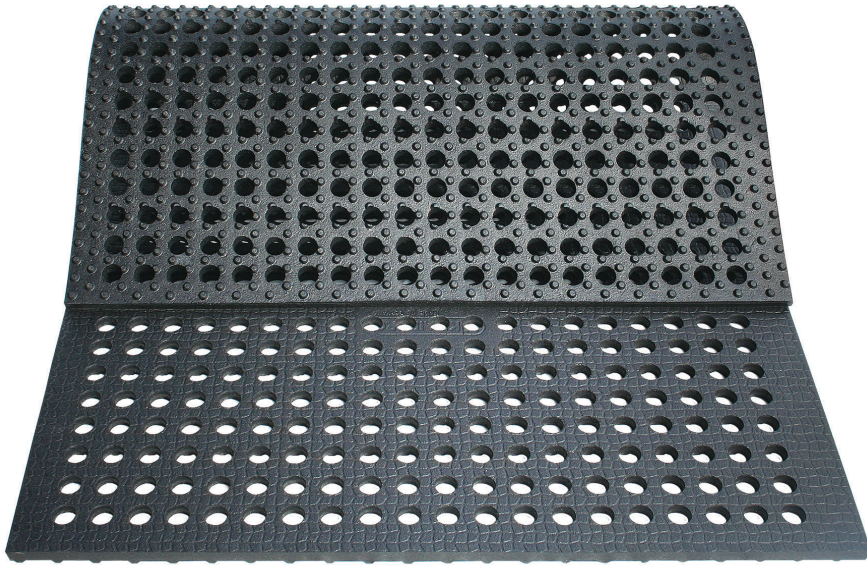
lower side grooved ridges

range of use:	lower side profile:	thickness:	width:	length:
concrete floor	grooved	1"	51"	79"

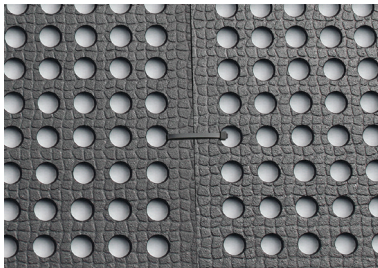
*Please take notice of the corresponding KRAIBURG specifications and installation instructions with useful advice and tips. You will obtain these at your local Agromatic dealer or at www.agromatic.net.



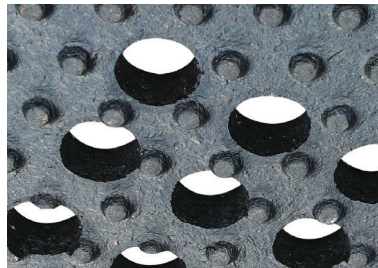
LOMAX



- suggested uses
 - ▶ soil stabilization
 - ▶ calf crates
- adapts to any subsurface
- straight sides, simply attach mats with zip ties if desired



soft and stable standing surface



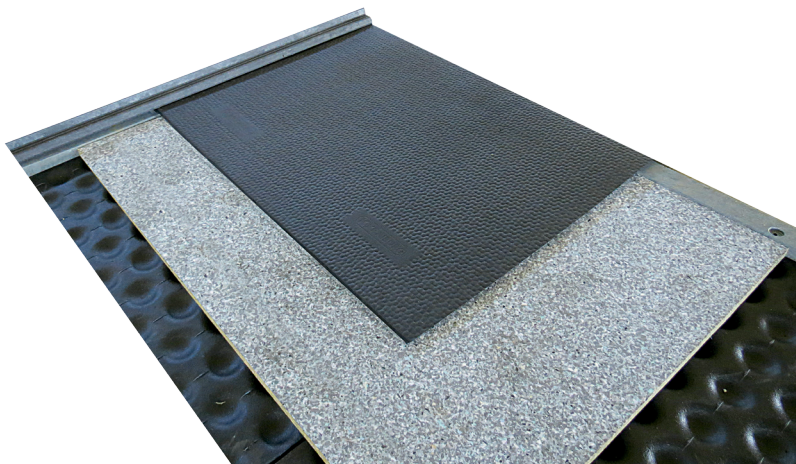
lower side 1/4" studs

range of use:	lower side profile:	thickness:	width:	length:
soil stabilization calf crates	studs (1/4")	1"	43"	69"

*Please take notice of the corresponding KRAIBURG specifications and installation instructions with useful advice and tips. You will obtain these at your local Agromatic dealer or at www.agromatic.net.



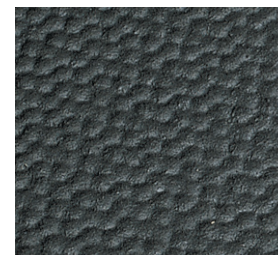
VITA ★ ★ ★ ★ ★



- three layer system (rubber-foam-rubber) provides 2-1/2" of optimal comfort
- pebbled surface enhances slip resistance for cow and calf
- reduces the need for bedding
- heat insulating
- seamless top VITA LongLine top cover
 - ▶ easy to clean and disinfect
 - ▶ optimal hygiene

**Dimensions:**

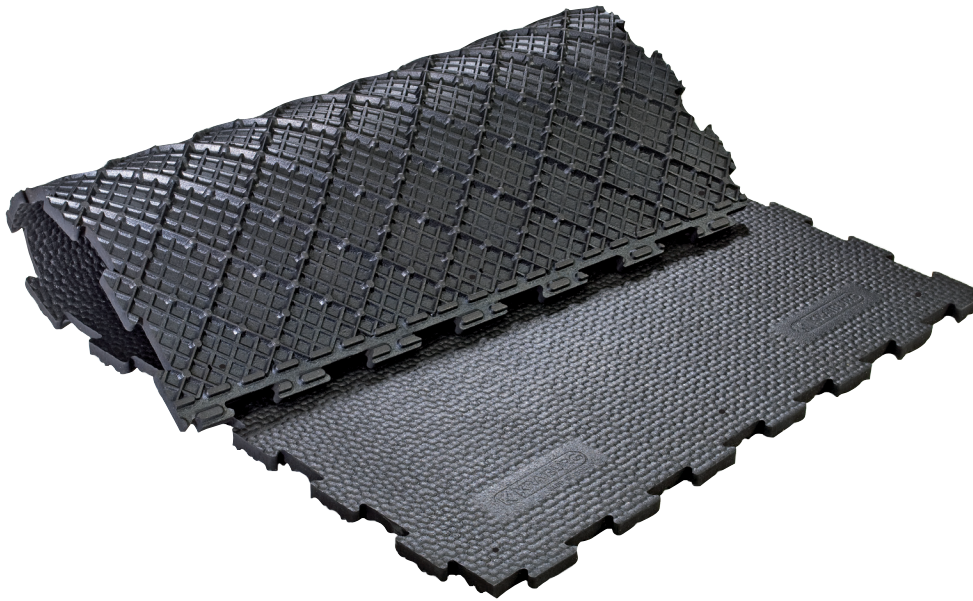
	thickness:	width:	length:
complete system:	2-1/2"	maximum 17' 3" *custom ordered	maximum 19' 8" *custom ordered
	thickness:	standard width:	standard length:
VITA LongLine	1/2"	11' 5"	11' 5" or 17' 3"
Foam	1"	48"	56"
VITA Cup	1"	47-1/4"	53"
	height:	width:	length:
VITA Top Bar	2"	2-1/8"	6' 6-3/4"
VITA Border Bar	2-3/8"	2-3/4"	7' 10"

proven **pebbled profile** on laying surface

*Please take notice of the corresponding KRAIBURG specifications and installation instructions with useful advice and tips. You will obtain these at your local Agromatic dealer or at www.agromatic.net.



SIESTA ★ ★



- comfortable softness through air-cushion-like lower side profile
- dimensionally stable, durable and slip-resistant
- easy to clean and disinfect
- 4 sides with puzzle edges ▶ very simple and flexible installation



Dimensions:

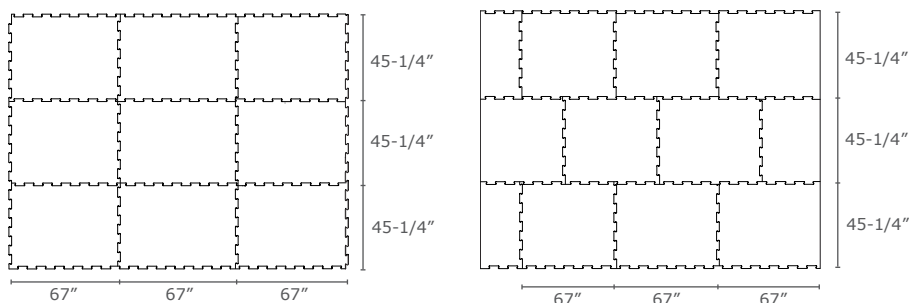
thickness:
1-1/4"

width:
45-1/4"

length:
67"

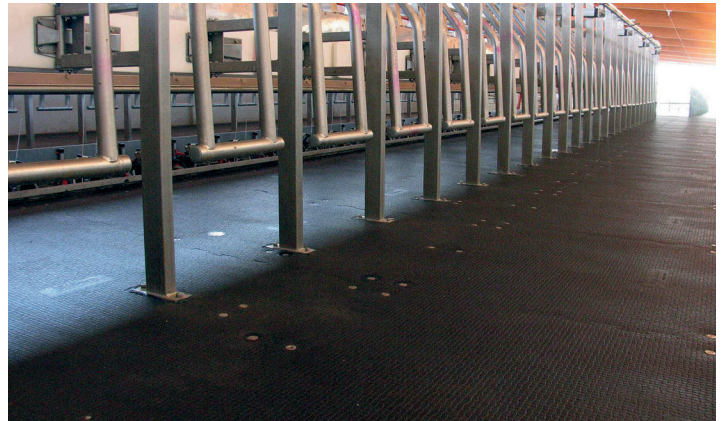
Installation*: 8 anchors per mat. Small pens can be installed without anchors.

Covering examples:

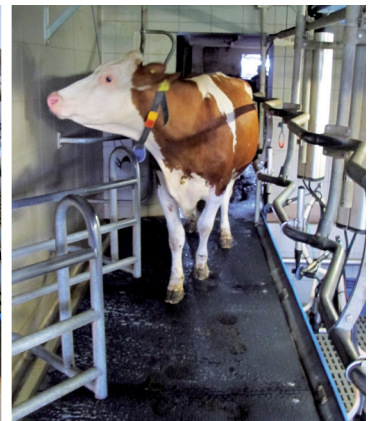


*Please take notice of the corresponding KRAIBURG specifications and installation instructions with useful advice and tips. You will obtain these at your local Agromatic dealer or at www.agromatic.net.

► **KRAIBURG rubber mats** are highly suitable for both new construction ...



... and renovations



Warranty

Anchors and washers are not covered by Agromatic warranty listed below.

*Anchors and washers are only warranted for failing to meet manufacturer's original specifications.

Stall Mats	Agromatic Warranty*			
	Tie Stalls		Free Stalls	
KEW Plus	rubber: foam:	3 years 3 years	rubber: foam:	10 years 5 years
WINGFLEX		none		10 years
TARSA		none	rubber: foam:	10 years 5 years
WELA LongLine		none		10 years
Soft Bed LongLine	rubber: foam:	none none	rubber: foam:	10 years 5 years
KKM/KKM puzzle/ KKM LongLine		5 years		10 years
KIM/KIM puzzle/ KIM LongLine		5 years		10 years
CALMA (Puzzle)		5 years		10 years
maxiBOX		5 years		10 years
POLSTA		none		10 years

***Stall Mat Warranties:**

10 years = 5 years full, then 5 years prorated
 5 years = 3 years full, then 2 years prorated
 3 years = 2 years full, then 50% in the 3rd year

* More detailed information is available on request.

Please pay attention to the information on the respective product pages.

Flooring	Agromatic Warranty*
profiKURA	5 years
KURA/Cirrus	5 years
KARERA	5 years
pediKURA®/pediCIRRUS	5 years
LOMAX	2 years
MONTA	2 years
VITA	5 years
SIESTA	5 years

***Flooring Warranties:** 5 year limited

Labor is not covered by Agromatic or KRAIBURG.

Installation – easy and fast

■ Important: pay attention to KRAIBURG installation instructions and guidelines!

- ▶ they are available in many languages
- ▶ they will be sent with the product but can be obtained from your local Agromatic dealer, or by calling (800) 800-5824 or going to www.agromatic.net.
- ▶ there are also installation videos of many products available (see website)

Tips for maintenance

- recommendation: spread a small amount of bedding on the lying mats, e.g. soft milled straw or mineral material (avoid any bedding with sharp or hard particles)
 - ▶ Moisture in the lying area, among other things, plays a major role in the development of skin diseases and infections!
- for automatic alley scrapers:
 - ▶ adjust scraper according to KRAIBURG specifications and check them regularly
- keep the walking areas as clean as possible
 - ▶ Important for claw health and slip resistance!
- treatment with a high-pressure cleaner, as well as with standard cleaning agents is possible

Tolerances for KRAIBURG mats

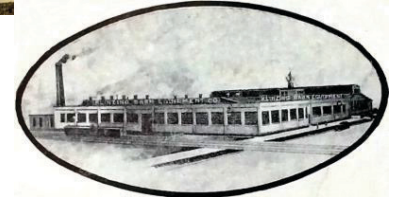
thickness: +3/-2 mm
 (+0.12/-0.08")
length + width: +/- 1.5 % (DIN ISO 3302-1 tolerance class M4)

The tolerances also apply within the mat and when installed.

More technical details on request. The products presented here should only be used for the mentioned applications. Technical specifications are subject to alterations. All sales are subject to our General Terms and Conditions.

Agromatic History

- 1899** A F Klinzing Mfg. Co. - Factory #1 St. Cloud, WI
At 14 years old, August F Klinzing manufactures
litter & feed carriers, stanchions, steel stalls, etc.
- 1904** August F Klinzing invents 'Klinzing Carrier'
U.S. Pat No. 837,306 Dec. 4, 1906.
- 1907** A F Klinzing Litter & Feed Carrier Mfg. Co. - Factory #2
St. Cloud, WI.
- 1913** Klinzing Manufacturing Co. incorporates.
- 1915** A F Klinzing Barn Equipment Co. - Factory #3 New Holstein, WI.
Newly built facility includes modern foundry.
- 1951** Louis and George Prentice become shareholders of A.F.Klinzing Co. Inc.
Company headquarters moves to 921-A South 2nd St. Milwaukee, WI.
- 1952** Manufacturing begins at 101 Western Ave. Fond du Lac, WI.
- 1953** A.F.Klinzing Foundry Division locates at 300 Pacific St. Ripon, WI.
- 1957** Vernon Hoppman starts working for A.F.Klinzing Co.
His son, David installs gutter cleaners during summer.
- 1958** August F Klinzing dies; Louis and George Prentice become new owners.
David Hoppman becomes full time welder.
- 1960** Main office locates at 740 North Plankinton Ave. Milwaukee, WI.
- 1963** Manufacturing moves to former Fond du Lac Co. Skyport hangar on Prairie Road.
- 1964** Name changes to Agromatic, a division of A.F.Klinzing Co. Inc.
- 1972** Vernon Hoppman, David Hoppman and Mary Prentice become owners.
- 1976** Company moves to N6989 Rolling Meadows Dr. Fond du Lac, WI
A.F.Klinzing Co. Foundry Division is sold to George Prentice.
- 1987** Dean Birschbach starts working as drill operator.
- 1997** Vernon Hoppman dies;
David and Marcia Hoppman become sole owners.
- 2010** Incorporated as Agromatic Inc.,
Dean Birschbach purchases company.

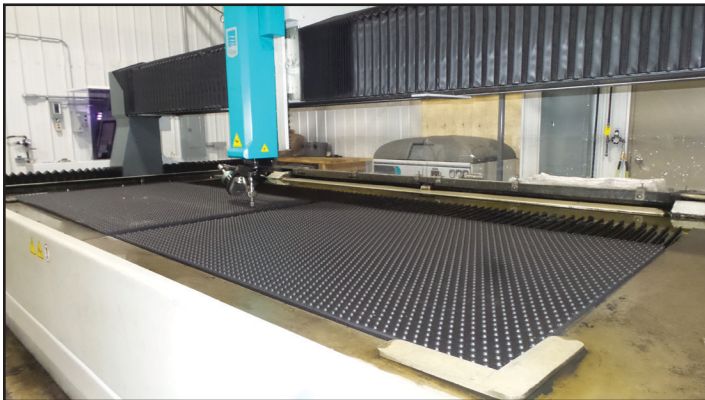


Dedication to KRAIBURG

Agromatic Inc. has had a strong partnership with KRAIBURG for over 20 years!



Agromatic Facility and Crew





 ***Agromatic***^{INC}

(800) 800-5824
www.agromatic.net

N6989 Rolling Meadows Dr.
Fond du Lac, WI 54937



brings the pasture indoors

