

# HVLS FAN

direct drive ceiling fan



- Ultra silent, energy saving comfort
- Easy installation – one piece innovative design
- Permanent magnet direct drive motor

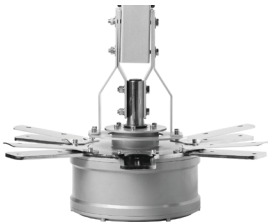
## PERMANENT MAGNETIC DIRECT DRIVE MOTOR

VS

## GEARBOX VARIABLE SPEED MOTOR

1. Energy efficient
2. Small and light weight
3. Quiet
4. Simple design
5. Maintenance free motor
6. Safe

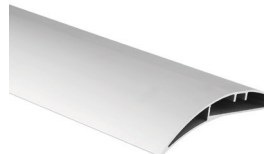
1. Consumes lots of energy
2. Large and heavy
3. Loud
4. Complex structure
5. Needs frequent maintenance
6. Hidden dangers such as gearbox leakage



Motor bracket is integrated to ensure the safety of the structure



Break-off protection design ensures the safety of the fan should the fan be stopped suddenly



Aluminum magnesium alloy tensile blades are light weight while providing strength, long life and safe operation



Wire rope traction device ensures motor stability



Automatic power off protection to ensure timely and safely shutdown