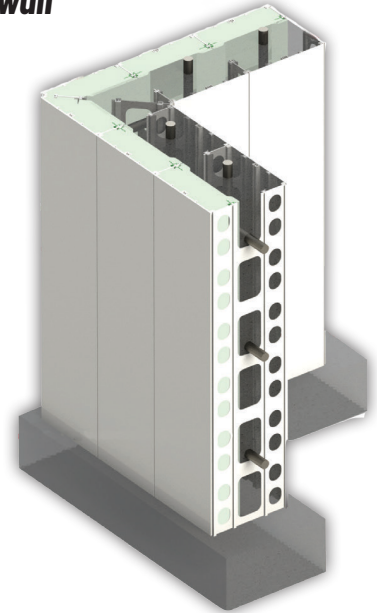




Agromatic INC

Concrete Wall Forms

- Rigid forms that easily slide together to create a durable pre-finished wall
- Finished product results in energy efficient, durable, easy to maintain walls
- Cost-effective alternative to conventional construction assemblies
- Thickness: 4" - 24"
- Insulation optional
- Build in straight lines or curves
- Ideal for retrofits or new construction
- Custom built per your specs & delivered to job site



Ideal for:

- Barns
- Robotic Parlors
- Car washes
- Rotaries
- Manure Tanks
- Commercial Buildings

Start your custom quote today! We need...

1. Wall Length
2. Wall Height
3. Desired Thickness
4. Rough window and door openings



(800) 800-5824 • agromatic.net • Fond du Lac, Wisconsin