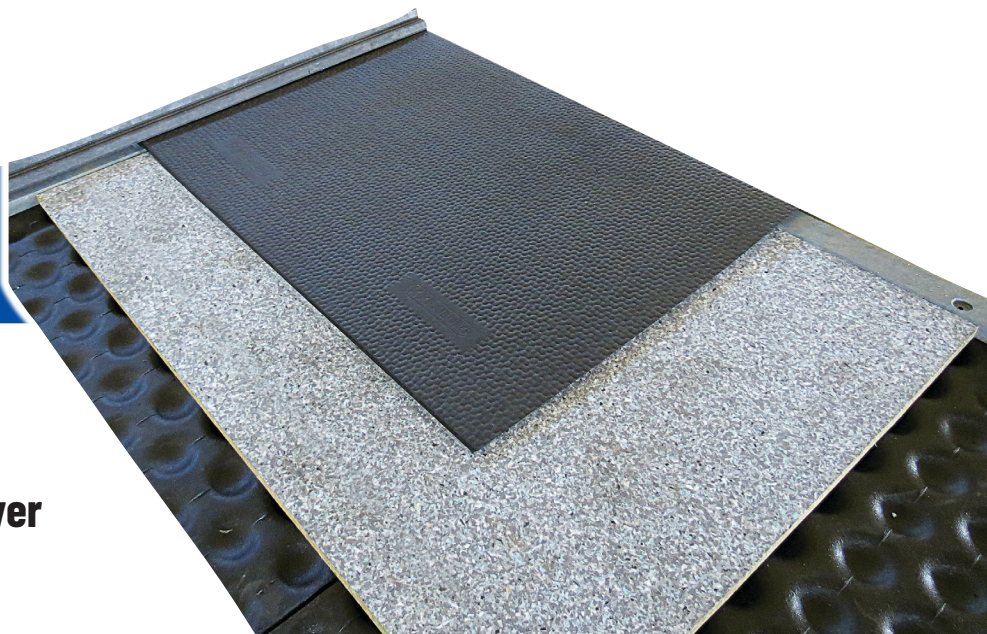


KINGSIZE

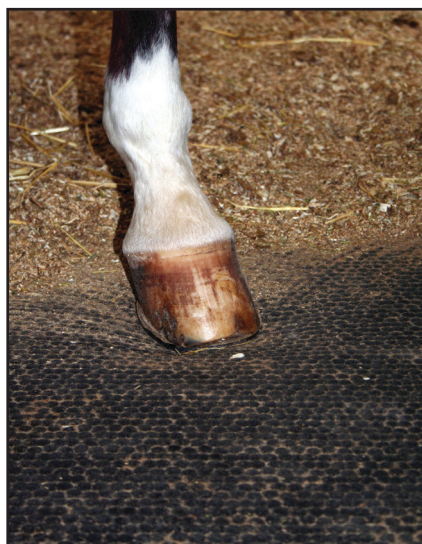
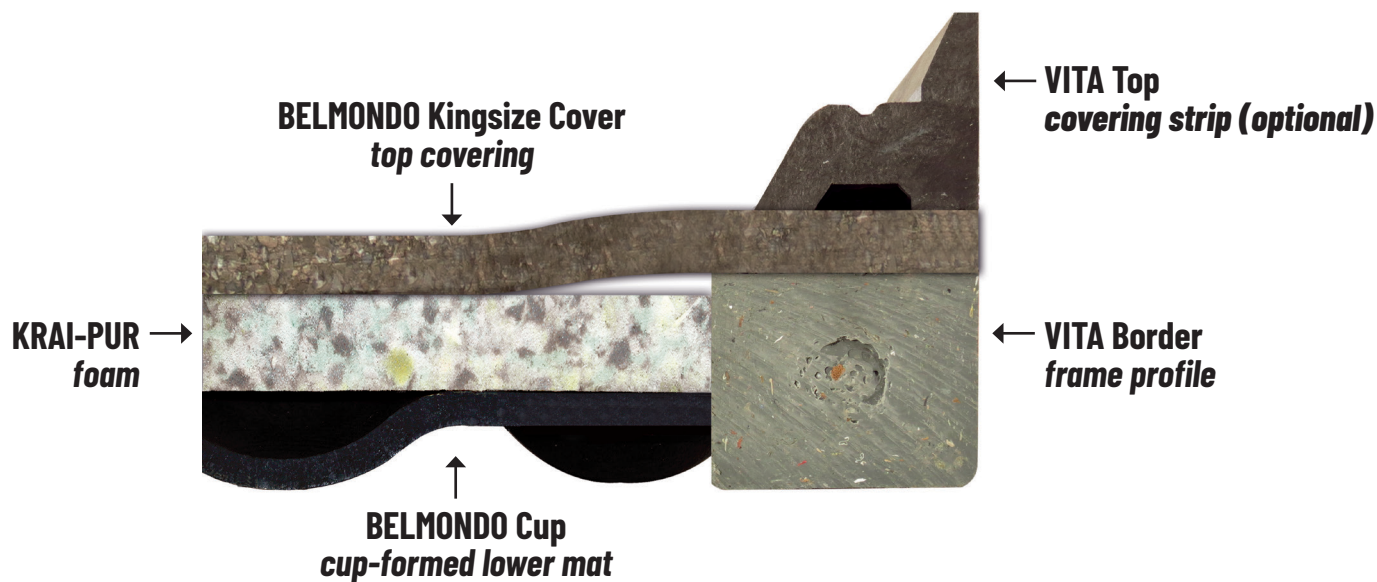


Designed for recovery pens

3 functional layers

- BELMONDO Kingsize Cover
- Krai-Pur Foam
- BELMONDO Cup

Thickness: 2-1/2"



Tolerances: thickness +3/-2 mm; length + width: +/- 1.5% (DIN ISO 3302-1 tolerance class M4)
The tolerances also apply within the mat and when installed.