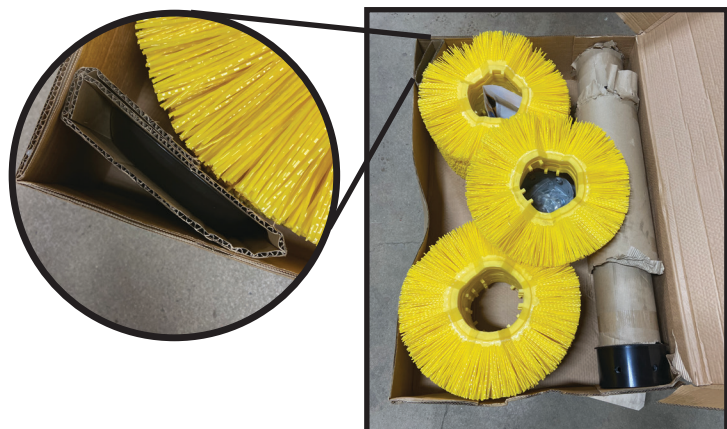




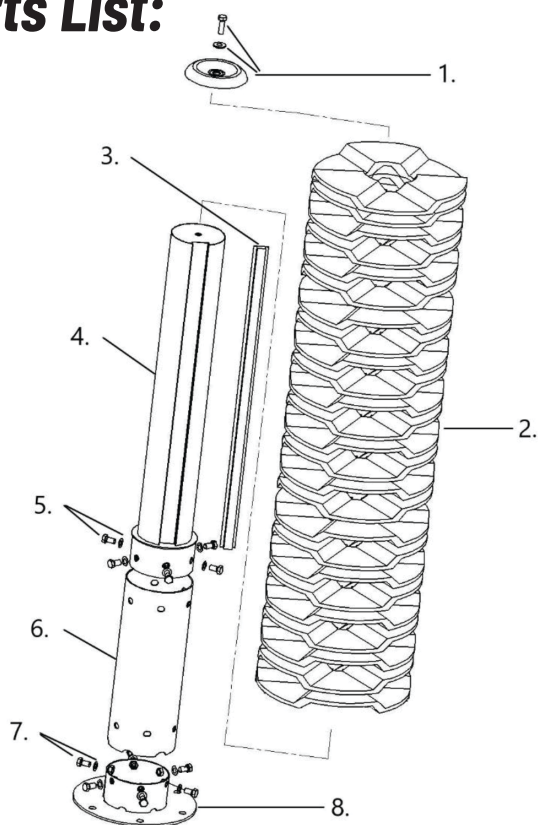
Agromatic^{INC}

EasySwing Totem Assembly Guide



TOTEM brush will arrive broken down in box. Do not discard packaging until brush is fully assembled to avoid accidentally losing important pieces.

Parts List:



- | | |
|--|---------|
| 1. Tensioner lid, 16x50 mm bolt + washer | 1 qty. |
| 2. Brush discs | 25 qty. |
| 3. Disc assembly guide | 1 qty. |
| 4. Upper frame | 1 qty. |
| 5. 16x30 mm upper frame bolts + washers | 6 qty. |
| 6. Lower frame | 1 qty. |
| 7. 16x30 mm lower frame bolts + washers | 6 qty. |
| 8. Galvanized floor stand | 1 qty. |

**Required for
Assembly:**
24 mm socket





Agromatic^{INC}

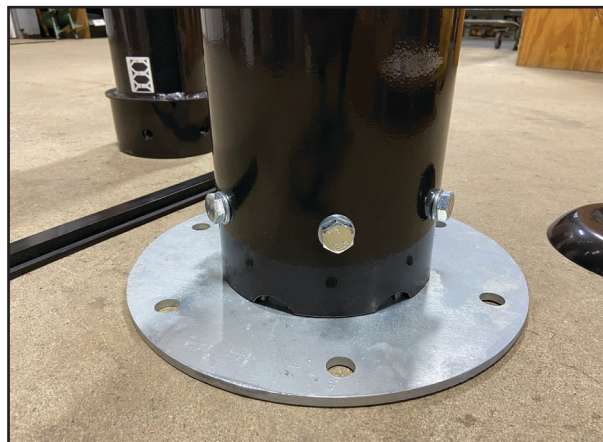
- 1. Verify all parts are in package.
(see parts list on page 1)**



x 25 rings



- 2. Attach the lower frame to the floor stand using
6 bolts and washers.**



- 3. Attach upper frame to lower frame using 6 bolts and washers.**





Agromatic^{INC}

4. Insert disc assembly guide into channel and begin assembling brush discs following this diagram. →



Disc Assembly Guide
in channel



5. Install the tensioner lid with 16x50 mm bolt + washer.



6. Install you new TOTEM brush!

The TOTEM can be:

- Bolted onto concrete pad (bolts not included)
- Installed with EasySwing ground installation kit (ordered separately)

