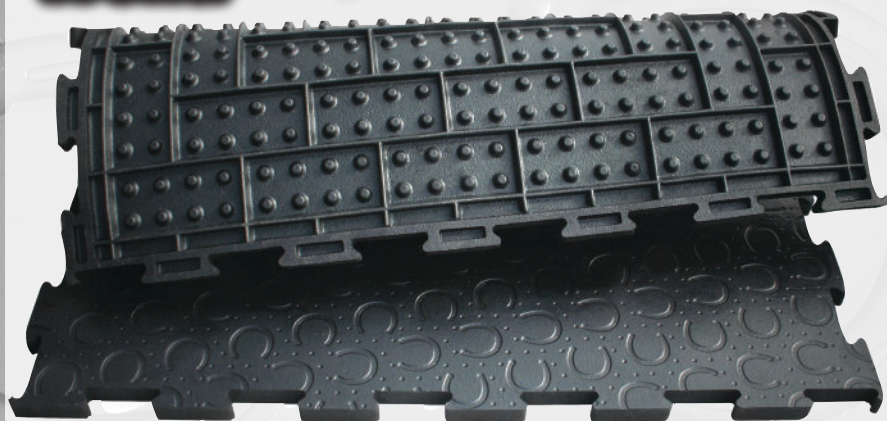




# Stall Mats

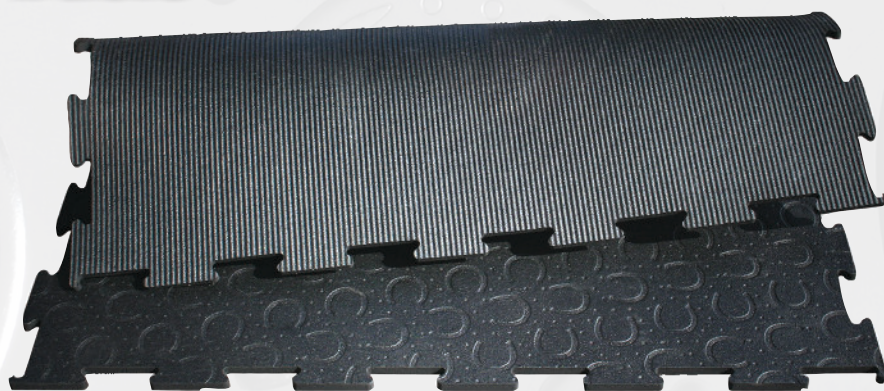
## Trend



### Air-Cushioned Comfort

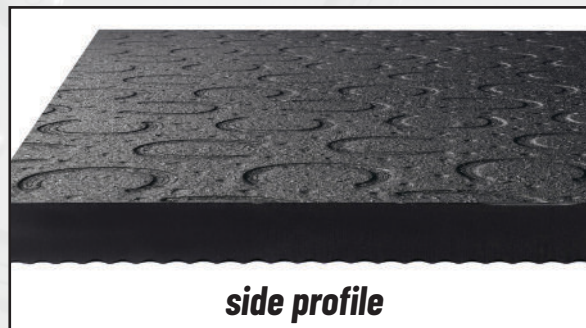
Thickness: 1" • Dimensions: 39" x 39"

## Basic



### Soft & Slip-Resistant

Thickness: 3/4" • Dimensions: 39" x 39"



Tolerances: thickness +3/-2 mm; length + width: +/- 1.5% (DIN ISO 3302-1 tolerance class M4)  
The tolerances also apply within the mat and when installed.

(800) 800-5824  
info@agromatic.net

agromatic.net/BELMONDO





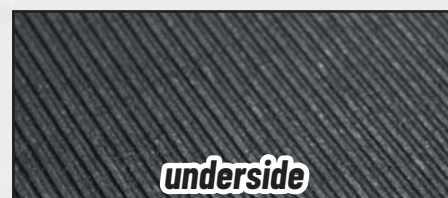
# Flooring

## Walkway



**Light  
Weight**

**Thickness: 1/2" • 39" x 39"**  
**Great Option For Trailers!**



## Step

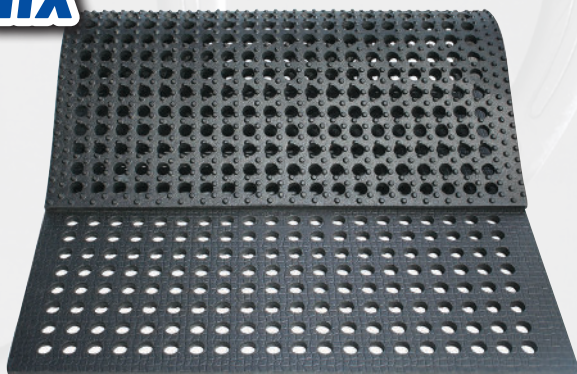


**For Inclined  
Areas**

**Thickness: 1" • Dimensions: 51" x 79"**



## Flix



**Adapts To Any  
Subsurface**

**Thickness: 1" • Dimensions: 43-1/4" x 68-3/4"**



Tolerances: thickness +3/-2 mm; length + width: +/- 1.5% (DIN ISO 3302-1 tolerance class M4)  
The tolerances also apply within the mat and when installed.

**(800) 800-5824**  
**info@agromatic.net**

**agromatic.net/BELMONDO**