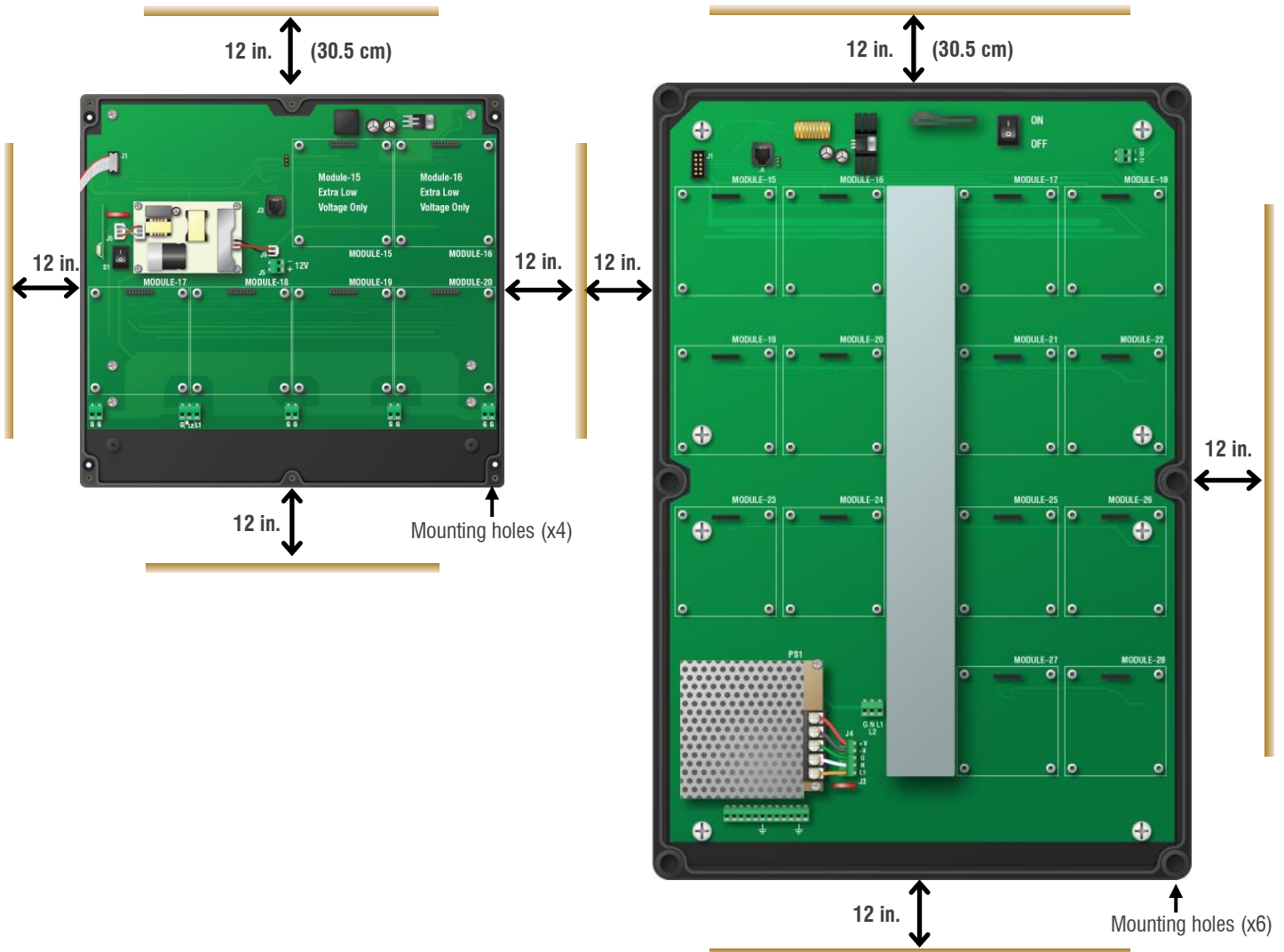


Mounting guidelines

- ◆ Mount the control on a sheltered, vertical surface
- ◆ Mount the control with the electrical knockouts facing down.
- ◆ Mount the control away from sources of moisture and heat.



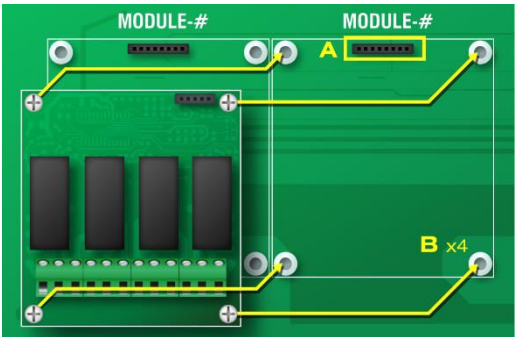
For the larger AutoFlex Connect:



- ◆ Mount high-voltage modules (ACT-1, ACT-1T, ACT-1V, RM-2, RM-2-3PH, RM-4, VAC-1, and LOOP-DRIVE) next to the trough, and then run the cabling through the trough.
- ◆ Mount low-voltage modules (IN-4, VDC-4, VCM-DC, and LOOP-SENSE) at the outer positions and run the cabling along the inside of the enclosure.

Installing modules

- 1. Position the module over the connector (A) and then press straight on to the connector.
- 2. Fasten the module in place using **all four screws** (B) provided.



Electrical ratings

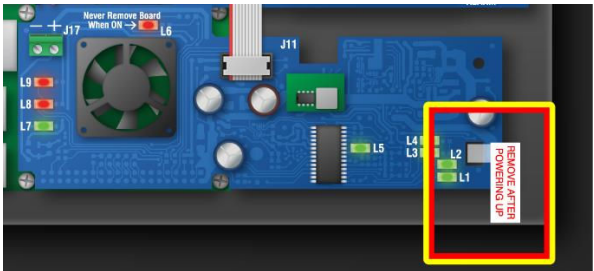
Control power	85 to 264 VAC, 50/60 Hz
Alarm relay	0.4 A at 125 VAC; 2 A at 30 VDC, resistive load 0.2 A at 125 VAC; 1 A at 30 VDC, inductive load
ACT-1 ACT-1V	15 A at 120/230 VAC, general-purpose (resistive) 1/2 HP at 120 VAC, 1 HP at 230 VAC 0-10 V DC signal feedback (ACT-1V only)
ACT-1T LOOP-DRIVE RM-2	20 A at 120/230 VAC, general-purpose (resistive) 1 HP at 120 VAC, 2 HP at 230 VAC
RM-2-3PH	1 HP at 120 VAC, 2 HP at 230 VAC 230 VAC coil, 70 VA inrush, pilot duty
RM-4	15 A at 120/230 VAC, general-purpose (resistive) 1/2 HP at 120 VAC, 1 HP at 230 VAC
VAC-1	7 A at 120/230 VAC, general-purpose (resistive) 4.9 FLA at 120/230 VAC, PSC motor 1/2 HP at 120 VAC, 1 HP at 230 VAC 800 W @ 120 VAC, 1600 W @ 230 VAC
VCM-DC VDC-4	0 to 10 VDC, 2K Ω load



- ◇ You can connect more than one piece of equipment to a variable stage or relay if they are the same type (such as fans) and the total current draw and horsepower does not exceed the limit.
- ◇ The maximum wire gauge for all terminals is 12 AWG, solid or stranded.

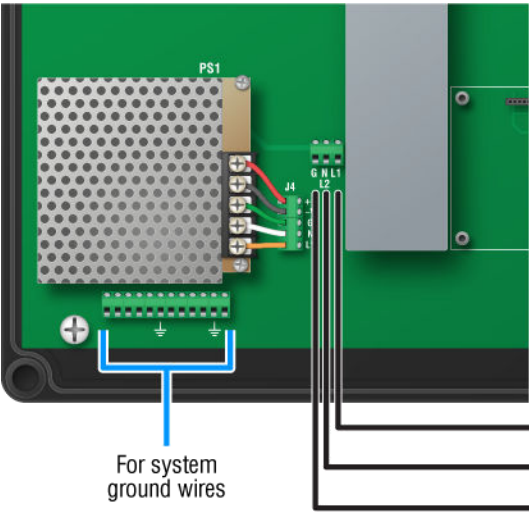


- ◇ Immediately after powering up the control, remove the battery tab from the power supply on the back of the display.

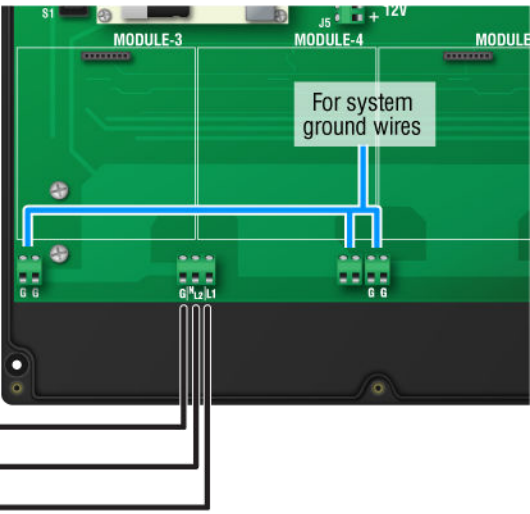


Incoming power

AutoFlex



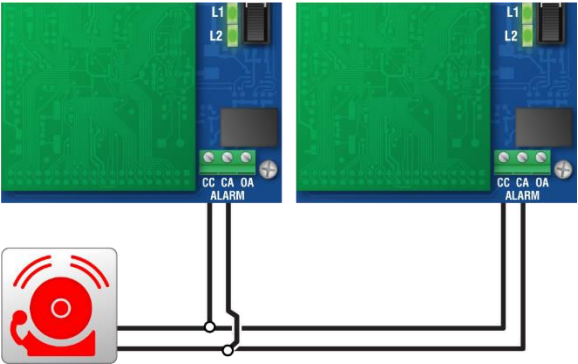
AutoFlex Mini



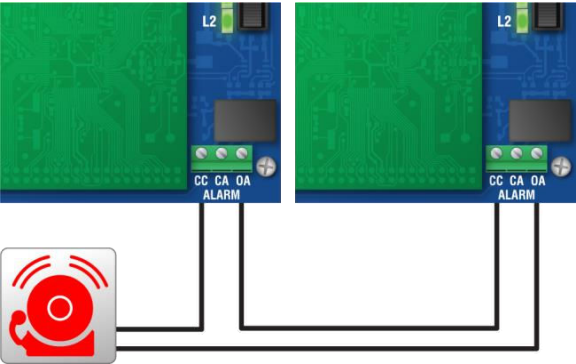
Alarm relay

Each AutoFlex control has an alarm relay connection on the inside of the cover. For complete installation information, read **Connecting an alarm system** in the **AutoFlex Connect II installation guide**.

Normally open alarm system



Normally closed alarm system

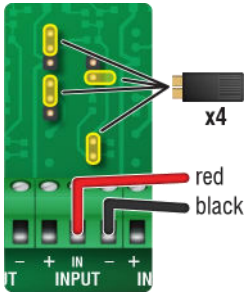


Input Module

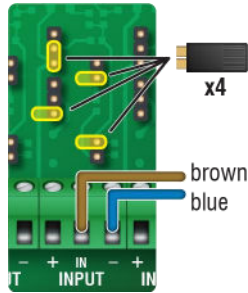
The IN-4 is a Smart Module that has connections for four analog sensors, dry contact switches, or dry contact pulse outputs. For complete installation information and a list of supported sensors, read **Connecting sensors to IN-4 modules** in the **AutoFlex Connect II installation guide**.

Place the shunts in the proper positions for the type of sensor you are connecting. For each sensor, there are four shunts to position.

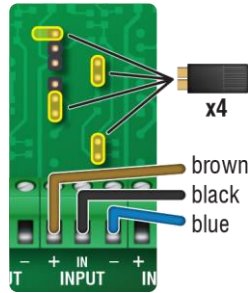
3K Series



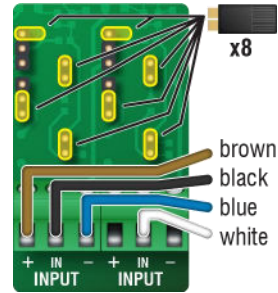
DOL15



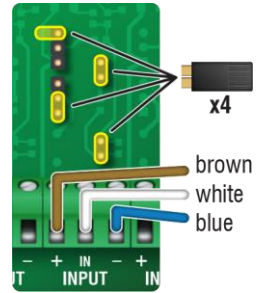
DOL114 temp. only



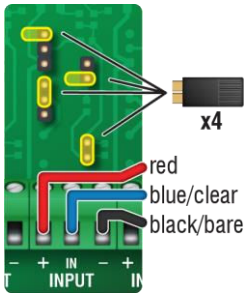
DOL114 temp. and hum.



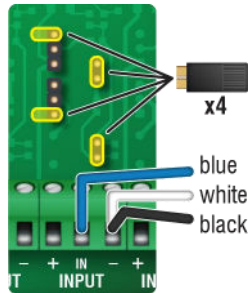
DOL114 hum. only



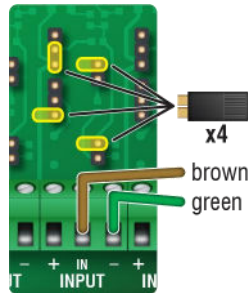
RHS



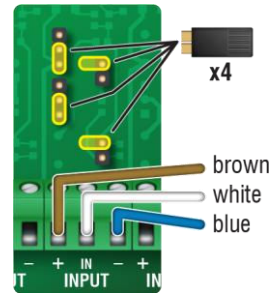
DOL19



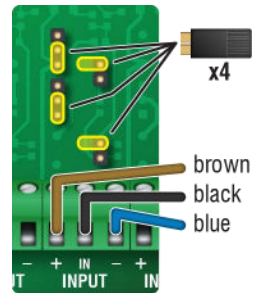
DOL53



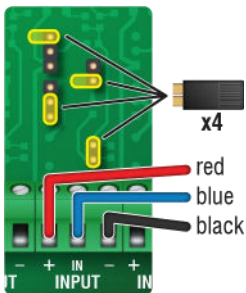
DOL16, 100 lux



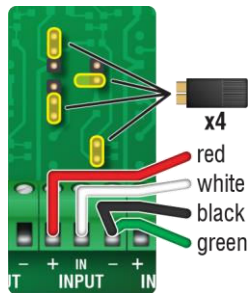
DOL16, 1000 lux



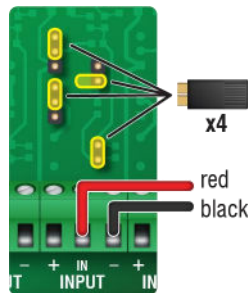
SPS-2



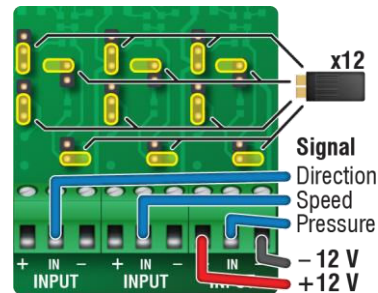
PRS



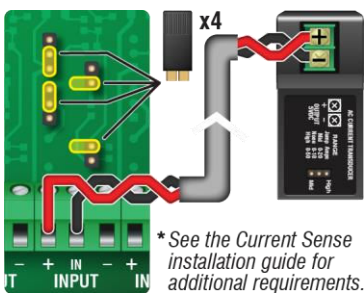
WINDSPEED-03



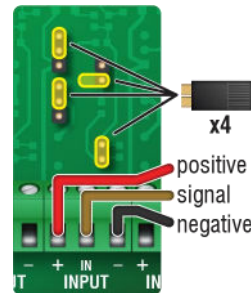
DOL58



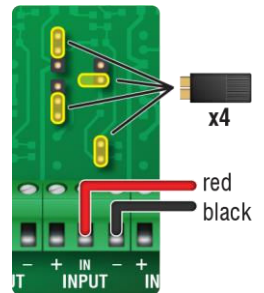
CURRENTSENSE-2



Dry contact pulse output



Dry contact digital switch



RM-2, RM-2-3PH, and RM-4 modules

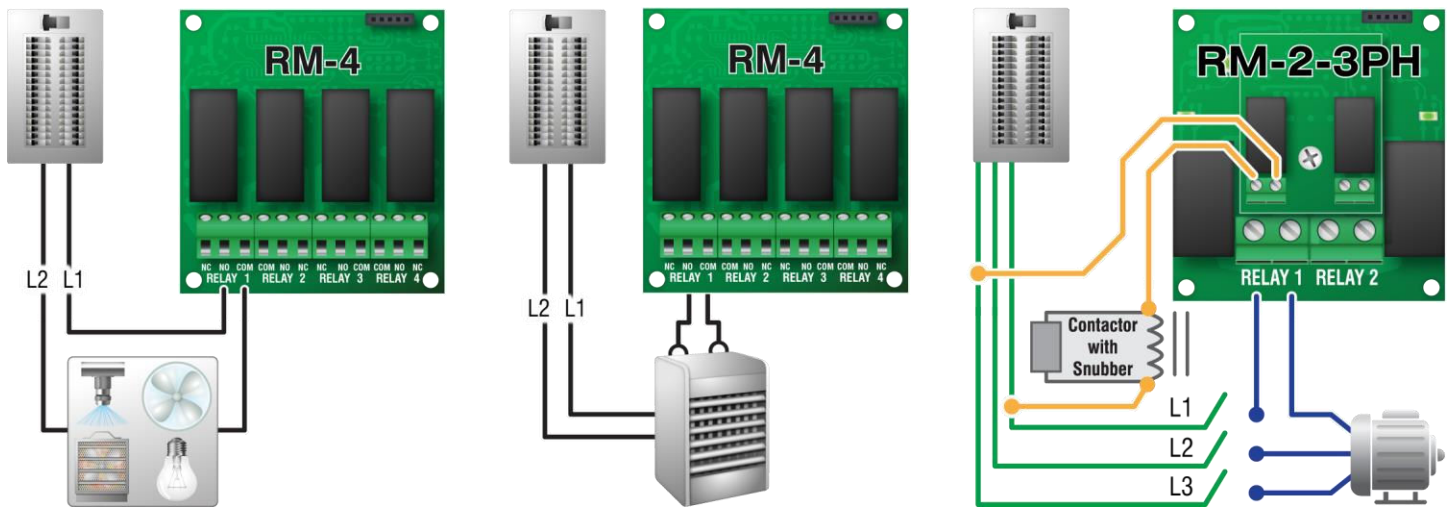
The RM-2, RM-2-3PH, and RM-4 are Smart Modules that precisely control the equipment connected to them.

- ◆ The **RM-2** has two high-capacity relays. Each relay has an integrated current sensor.
- ◆ The **RM-2-3PH** has two high-capacity relays and two pilot relays for controlling three-phase motors and equipment. The relays operate as pairs, with one high-capacity and one pilot relay in each pair. The high-capacity relays each have an integrated current sensor.
- ◆ The **RM-4** has four relays. The RM-4 *does not have* current sensors.

For complete installation information, read **Connecting equipment to RM-2, RM-2-3PH, and RM-4 modules** in the **AutoFlex Connect II installation guide**.



Wiring instructions are the same for the RM-2 and the RM-4 Relay Modules. The following examples use the RM-4.



ACT-1, ACT-1T, and ACT-1V modules

Actuator Modules are Smart Modules that have one OPEN and one CLOSE relay specifically for actuator and curtain control. The ACT-1 uses potentiometer feedback ACT-1T uses timed feedback, and ACT-1V uses 0-10 V DC-signal feedback.

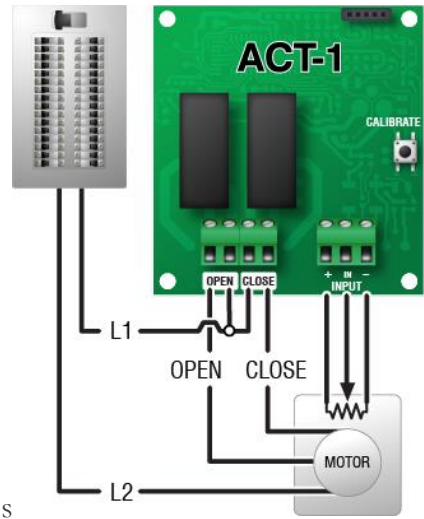
For complete installation information, read **Connecting equipment to ACT-1, ACT-1T, and ACT-1V modules** in the **AutoFlex Connect II installation guide**.



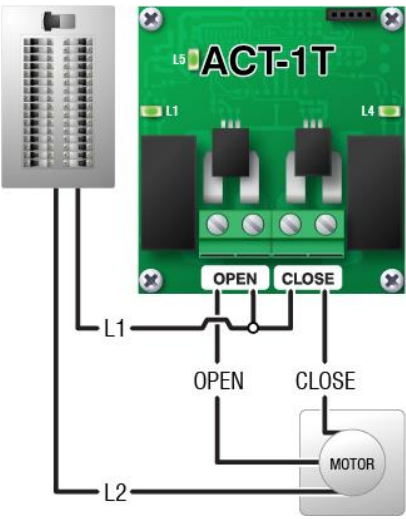
- ◇ Do not run actuator feedback wires in or along the same conduit as AC-power lines.
- ◇ If you are unsure of the potentiometer wiring for your actuator, read **Determining correct actuator feedback wiring** in the **AutoFlex Connect II installation guide**.
- ◇ If you are measuring AC power with a digital multimeter (DMM) and a limit switch opens the circuit, the DMM measures voltage after the relay switch even if the relay is open.

AC-powered actuators

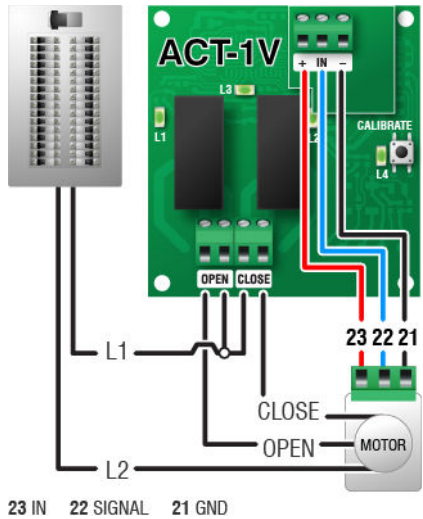
Potentiometer feedback



Timed feedback

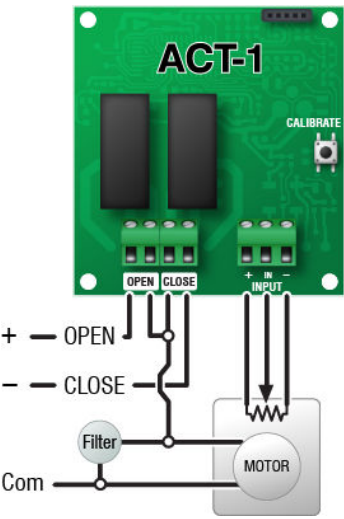


0-10 V DC signal feedback

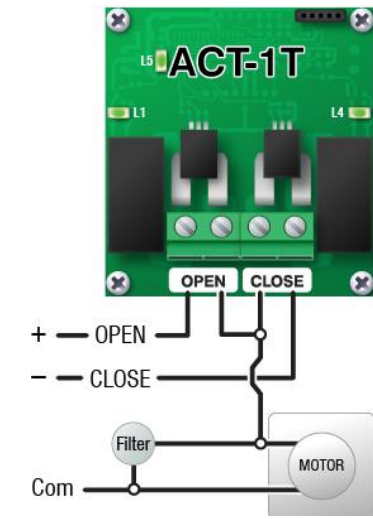


DC-powered actuators

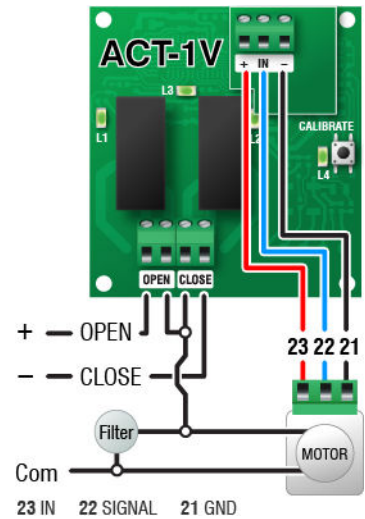
Potentiometer feedback



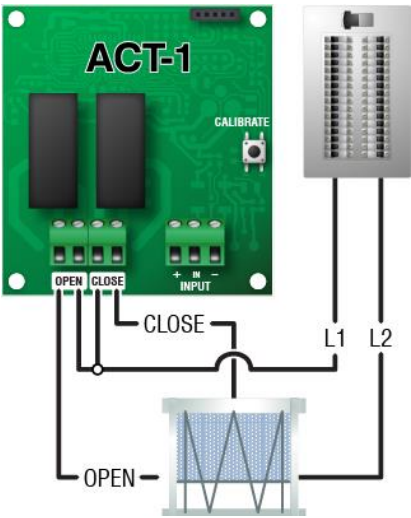
Timed feedback



0-10 V DC signal feedback



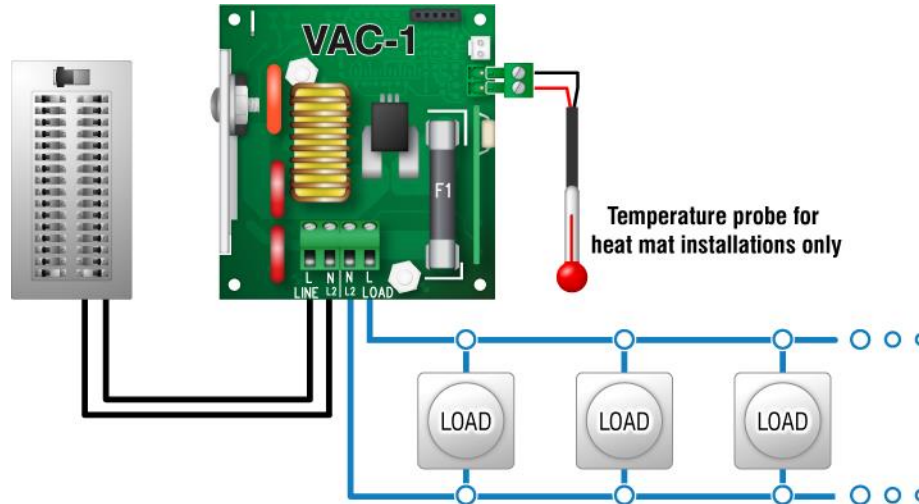
Curtain machines



VAC-1 module

The VAC-1 is a single-output Smart Module with a **current sensor** that can control variable-speed fans, heat mats, and lights. A temperature probe connector is included for heat mat control. For complete installation information, read **Connecting equipment to VAC-1 modules** in the **AutoFlex Connect II installation guide**.

Heat mats

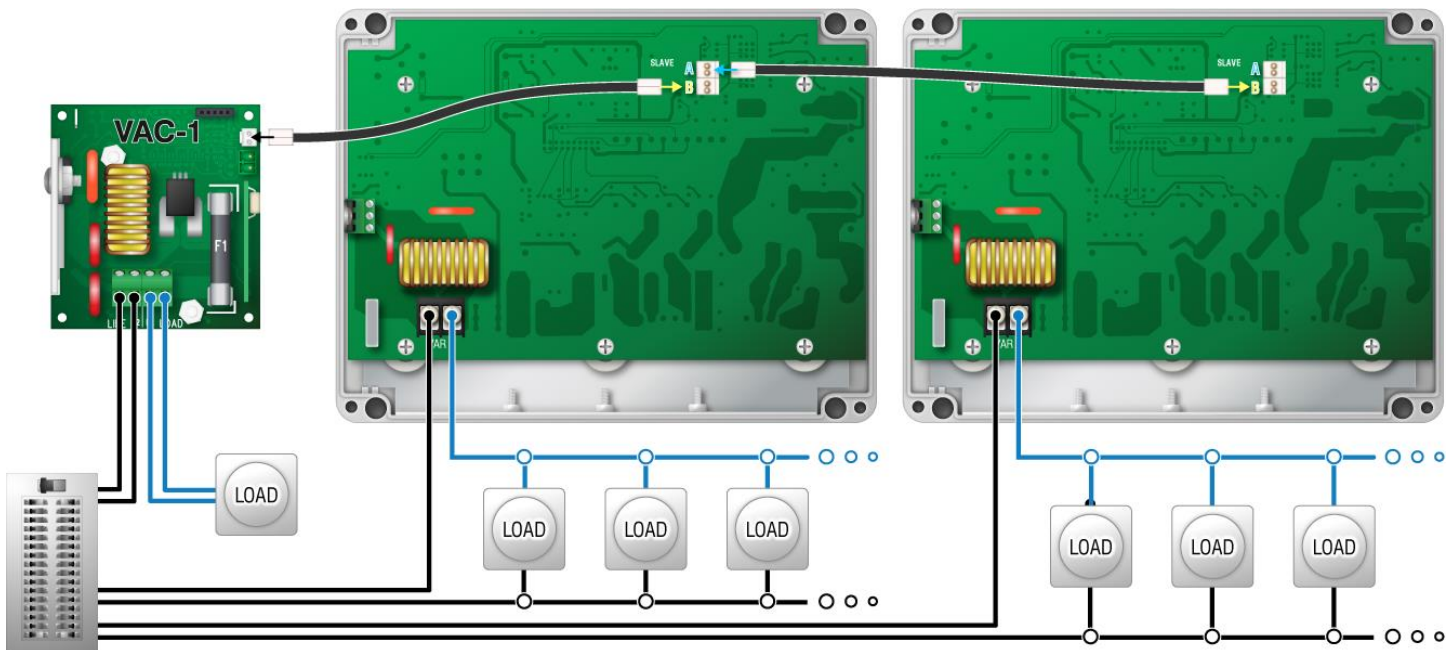


VLX-20 Variable Load Expansion Box

The VLX-20 has a 20 A variable AC stage that allows you to increase the capacity of the VAC-1. The VLX-20 is ideal for controlling loads such as heat mats, heat lamps, and incandescent lights.

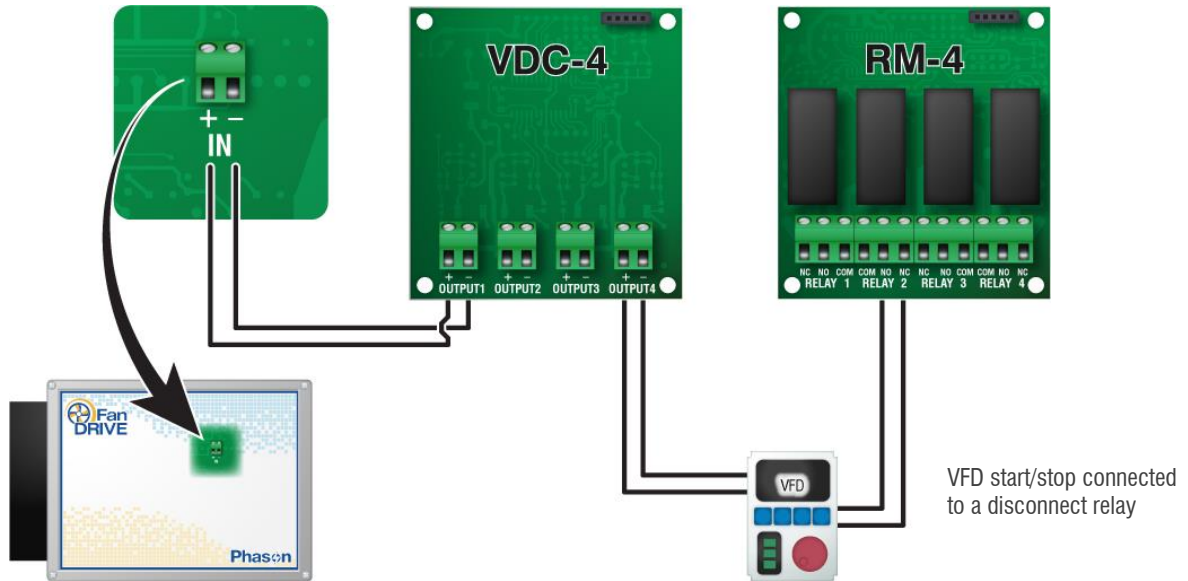


The VAC-1 and VLX-20 **must** be on the same phase.



VDC-4 module

The VDC-4 is a Smart Module that has four outputs for controlling variable frequency drives (VFD), FanDRIVEs, or other equipment requiring a 0 to 10 V DC signal. For complete installation information, read **Connecting equipment to VDC-4 modules** in the **AutoFlex Connect II installation guide**.



The disconnect relay for the variable frequency drive is a relay on an RM-4 module. Configure the relay to follow the variable DC output. For more information, refer to the online help at the AutoFlex Connect display.

VCM-DC module

The VCM-DC is a Smart Module that monitors and precisely controls airflow using a chimney fan, damper, and measuring fan. For complete information, read **Connecting equipment to VCM-DC modules** in the **AutoFlex Connect II installation guide**.

