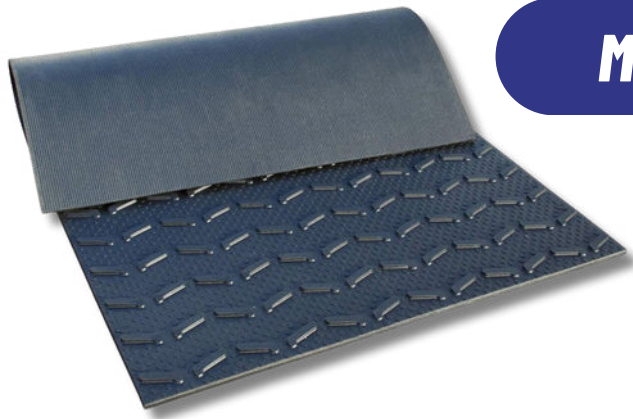


# **K** KRAIBURG **Beef Flooring**



**CONTINUOUS MONITORING**  
RUBBER FLOOR MATS FOR ANIMAL HOUSES  
✓ PAH test passed  
✓ Manufacturing process certification  
DLG Certificate 6890

## **MONTA**



**MOST POPULAR**

- **1" thick**
- **Raised profile ensures traction in heavily trafficked areas**
- **Improves grip on sloped areas**
- **Allows for easy navigation in both directions**

***Recommended by Dr. Nels Lindberg!***



## **LOSPA SB**



- **7/8" thick**
- **Curved surface with 5% slop toward slats**
- **Helps facilitate drainage**
- **Can be custom cut for slatted flooring**
- **Improves slip-resistance which reduces the risk of injury**
- **Custom cut to fit your facility**



**(920) 922-1970**



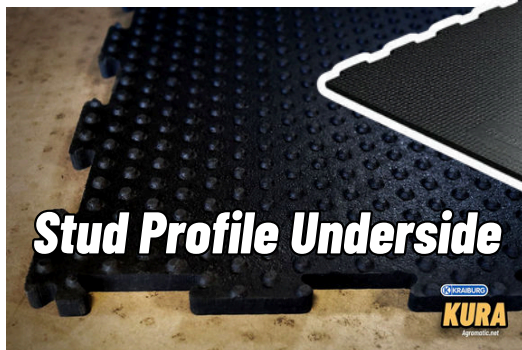
**agromatic.net**

# KRAIBURG Beef Flooring



**CONTINUOUS MONITORING**  
RUBBER FLOOR MATS FOR ANIMAL HOUSES  
✓ PAH test passed  
✓ Manufacturing process certification  
DLG Certificate 6890

## KURA



**Stud Profile Underside**

- 1" thick
- Best footing and ideal softness for optimal traction
- Slip-resistant flooring for concrete walking areas
- Interlocking edges create seamless surface

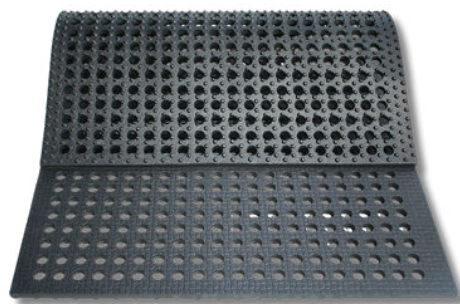
## Cirrus



**Grooved Underside**

- 3/4" thick
- Better footing and ideal softness for optimal traction
- Ideal for areas with vehicle traffic
- Can be custom cut for slatted flooring

## LOMAX



- 1" thick
- Adapts to any subsurface
- Simple installation
- Perfect for: stall stabilization, wash areas, and calf facilities

(920) 922-1970



[agromatic.net](http://agromatic.net)

