

AutoFlex Connect Smart Modules

Actuator Modules

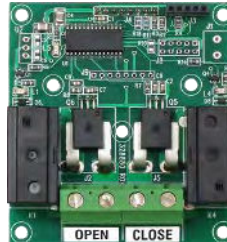
ACT-1: potentiometer feedback



The ACT-1 has one open and one close relay to control inlets with potentiometer feedback or control curtain machines without feedback. The built-in microprocessor provides safety protection.

- 15 A at 120/230 VAC, general-purpose (resistive)
- 1/2 HP at 120 VAC; 1 HP at 230 VAC

ACT-1T: timed feedback



The ACT-1T has one open and one close relay, each with a current sensor, to control inlets that require timed feedback. The built-in microprocessor continuously monitors the current and provides safety protection.

- 20 A at 120/230 VAC, general-purpose (resistive)
- 1 HP at 120 VAC, 2 HP at 230 VAC

ACT-1V : 0-10 V DC-signal feedback



The ACT-1V has one open and one close relay to control drive motors that have 0-10 V DC signal output, such as actuators or curtain machines. The built-in microprocessor provides safety protection.

- 15 A at 120/230 VAC, general-purpose (resistive)
- 1/2 HP at 120 VAC; 1 HP at 230 VAC
- 0-10 V DC signal feedback

Relay Modules

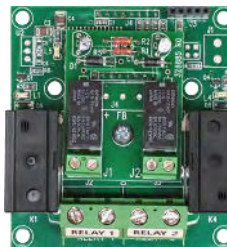
RM-2 : high-capacity, current sensing



The RM-2 has two high-capacity relays, each with a current sensor. The relays can control equipment such as single-speed fans, heaters, lights, and other equipment. The built-in microprocessor continuously monitors the current and provides safety protection.

- 20 A at 120/230 VAC, general-purpose (resistive)
- 1 HP at 120 VAC, 2 HP at 230 VAC

RM-2-3PH : 3-phase



The RM-2-3PH has two high-capacity relays and two pilot relays for controlling three-phase motors and equipment. The relays operate as pairs, with one high-capacity and one pilot relay in each pair. The built-in microprocessor continuously monitors the current on the high-capacity relays and provides safety protection.

- 1 HP at 120 VAC, 2 HP at 230 VAC
- 230 VAC coil, 70 VA inrush, pilot duty

RM-4: general-purpose

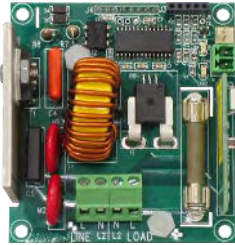


The RM-4 has four relays to control fans, heaters, lights, and other equipment. The built-in microprocessor provides safety protection.

- 15 A at 120/230 VAC, general-purpose (resistive)
- 1/2 HP at 120 VAC, 1 HP at 230 VAC

Variable modules

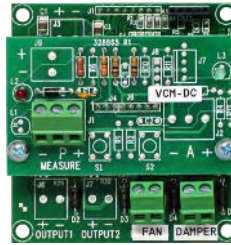
VAC-1: variable AC



The VAC-1 has a single output that controls variable-speed fans, heat mats, or lights. A temperature sensor input is included for heat mat control. There is also a connection for a Variable Load Expansion Box (VLX-20). The built-in microprocessor continuously monitors current and provides safety protection.

- 7 A at 120/230 VAC, general-purpose (resistive)
- 4.9 FLA at 120/230 VAC, PSC motor
- 1/2 HP at 120 VAC, 1 HP at 230 VAC
- 800 W @ 120 VAC, 1600 W @ 230 VAC

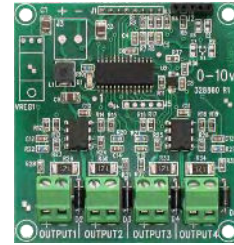
VCM-DC: chimney fan



The VCM-DC monitors and precisely controls airflow using a chimney fan, damper, and measuring fan. The built-in microprocessor continuously monitors and handles fault conditions.

- 0 to 10 VDC, 2K Ω load

VDC-4: variable DC



The VDC-4 has four outputs for controlling variable frequency drives (VFD), FanDRIVES, or other equipment requiring a 0 to 10 V DC signal. The built-in microprocessor provides safety protection.

- 0 to 10 VDC, 2K Ω load

Sensor module

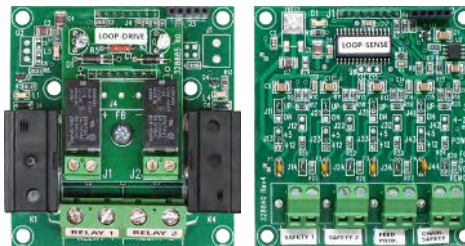
IN-4: sensor inputs



The IN-4 is a four-input Smart Module precisely measures analog, digital, and pulse/count sensors. The built-in microprocessor that continuously monitors the sensors and communicates the status and any fault conditions.

Chain Disk System

AFX-FEED-LOOP: chain disk feed systems / feed loops



The Feed Loop Kit contains a drive module and a sensor module. The LOOP-DRIVE has one relay for a chain/drive motor and one for an auger/fill motor. The LOOP-SENSE has one input for a proximity sensor and one for a chain safety sensor. There are two inputs for additional sensors. The built-in microprocessors continuously monitor the current and sensors and provide safety protection.

- 20 A at 120/230 VAC, general-purpose (resistive)
- 1 HP at 120 VAC, 2 HP at 230 VAC

Additional information

For more information, contact your dealer or visit www.phasoncontrols.com.