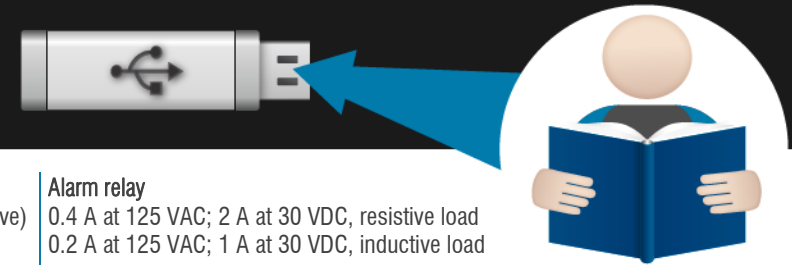


- (A) Display cable**
Disconnect the cable during installation. Reconnect it when done.
- (B) Voltage switch** ⚠️
Set the switch to the correct line voltage.
- (C) Incoming power**
Connect the incoming power from the panel.
- (D) Temperature sensor (TEMP1 to TEMP4)**
Connect the primary temperature sensor to TEMP1. Connect any additional sensors to the other terminals.
- (E) Actuator feedback (ACT-1 and ACT-2)**
Connect the feedback potentiometer from the actuator.

- (F) Alarm relay**
Connect an external alarm system or siren.
- (G) General-purpose relays (STG-1 to STG-6)**
Connect single-speed/stage heating/cooling equipment.
- (H) Variable stages (VAR-1 and VAR-2)**
Connect variable speed fans. **(I) Fuses (F1 and F2)**
The fuses are for the variable stages. F1 is for VAR-1 F2 is for VAR-2.
- (J) USB**
Connect a USB drive when saving or loading settings, or updating firmware.

- (K) OUTDOOR**
Connect a Phason 3K Temperature Sensor for measuring outdoor temperature.
- (L) +5V**
Can provide +5 VDC
- (M) DOL (M: AUX1 to AUX3)**
Connect DOL119 Carbon Dioxide or DOL 53 Ammonia Sensors. Place the jumpers on the correct pins.
- (N) DOL 114 (TEMP / HUM)**
Connect a DOL 114 Temperature and Humidity Sensor. Place the jumpers on the correct pins.
- (O) Pulse counter (COUNT)**
Not available, used for future development.



Input power
120/230 VAC, 50/60 Hz

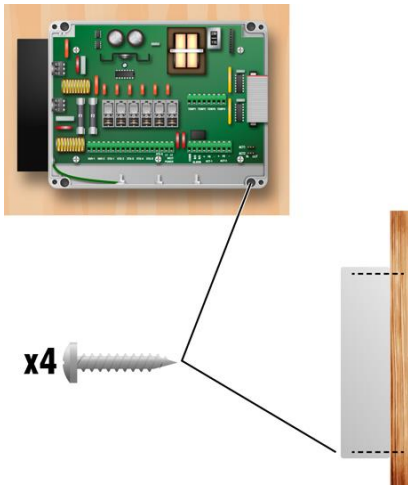
Fuses (2: F1 and F2)
15 A, 250 VAC ABC-type ceramic

Variable stages (2: VARI-1, VARI-2)
10 A at 120/230 VAC, general-purpose (resistive)
7 FLA at 120/230 VAC, PSC motor
1/2 HP at 120 VAC, 1 HP at 230 VAC, PSC motor

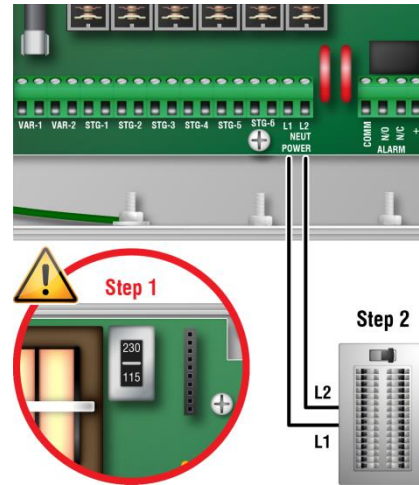
Relay stages (6: STG-1 to STG-6)
10 A at 120/230 VAC, general-purpose (resistive)
1/3 HP at 120 VAC, 1/2 HP at 230 VAC
360 W tungsten at 120 VAC

Alarm relay
0.4 A at 125 VAC; 2 A at 30 VDC, resistive load
0.2 A at 125 VAC; 1 A at 30 VDC, inductive load

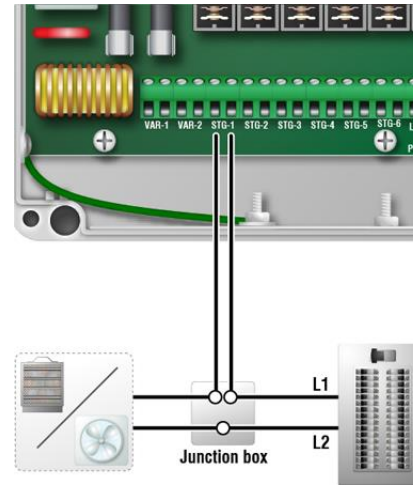
Mounting holes and orientation



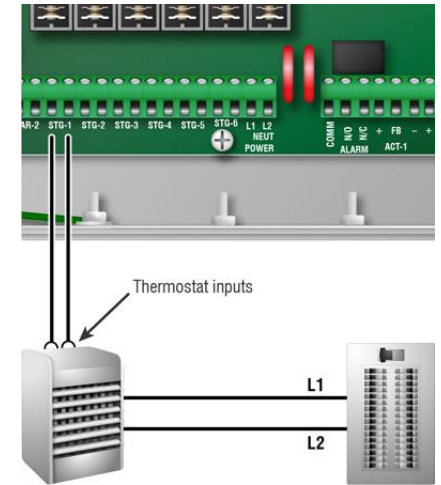
Incoming power



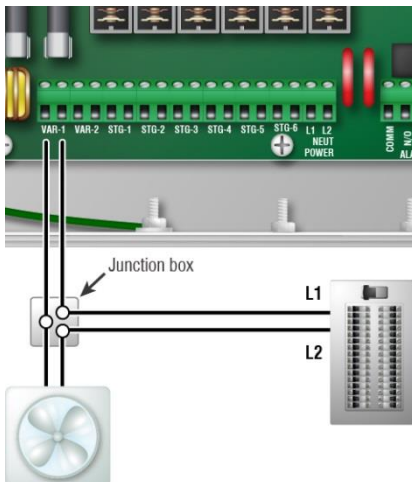
Single-speed fan or electric heater



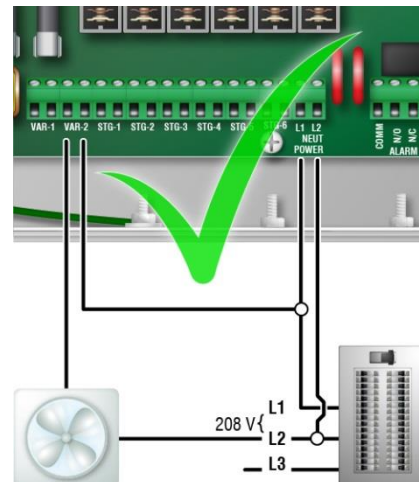
Gas-fired furnace



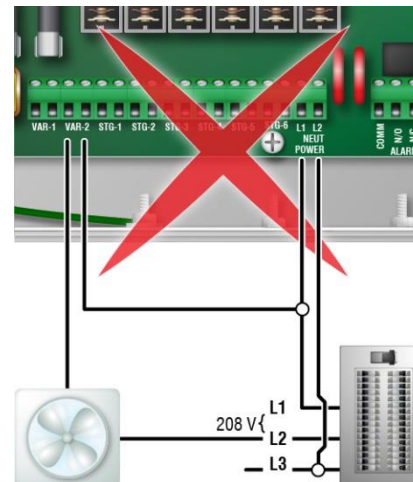
Variable speed fan



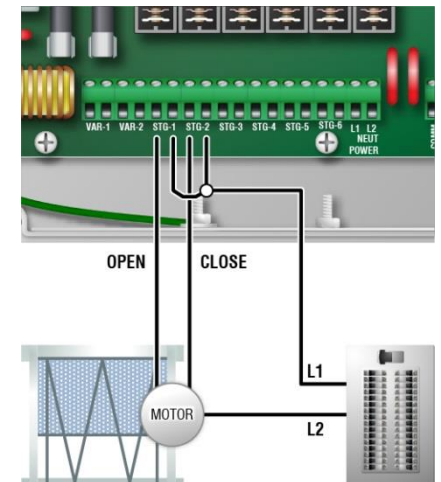
Correct three-phase wiring



Incorrect three-phase wiring

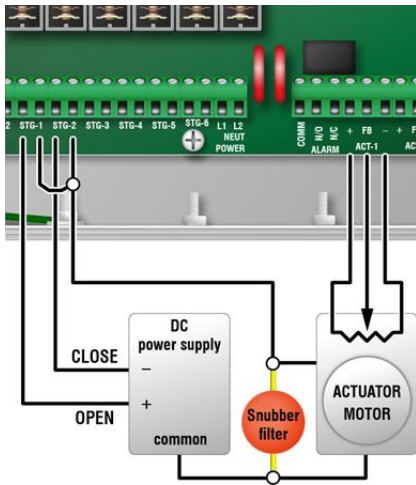


Curtain machine

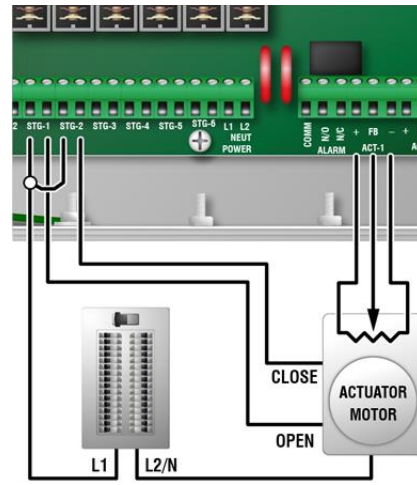




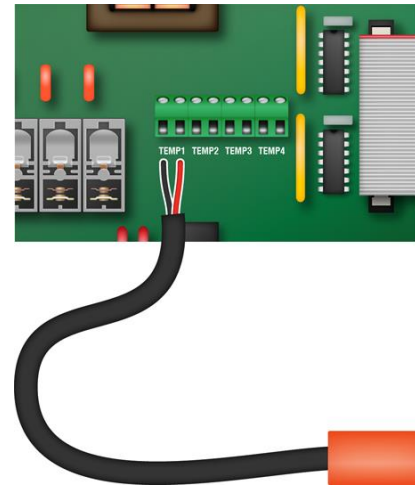
DC-powered actuator



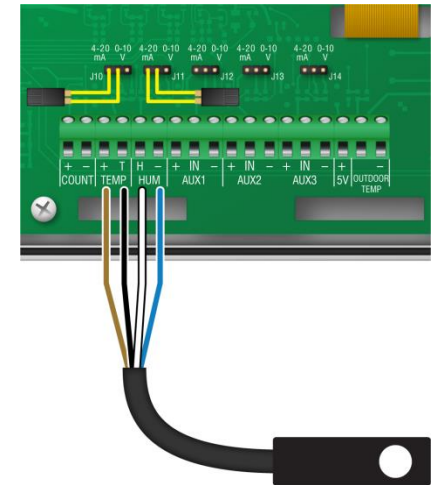
AC-powered actuator



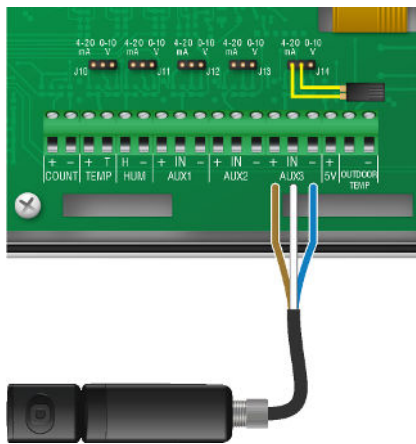
Temperature sensor



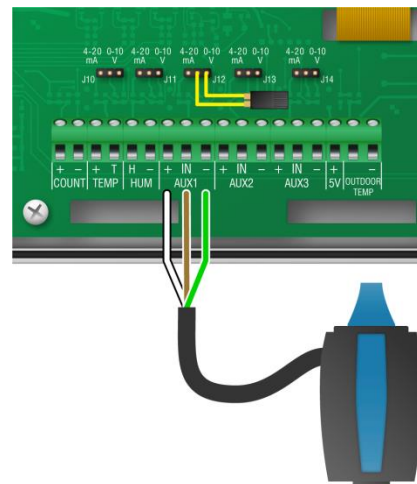
DOL 114 temperature and humidity



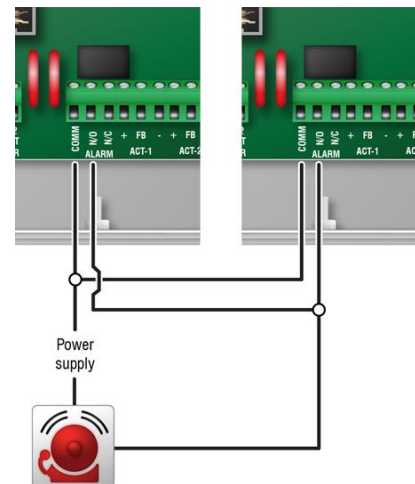
DOL 119 carbon dioxide



DOL 53 ammonia



Normally open alarm system



Normally closed alarm system

