



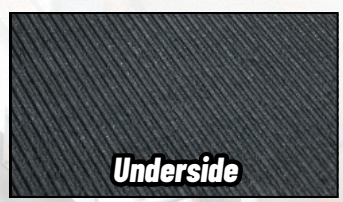
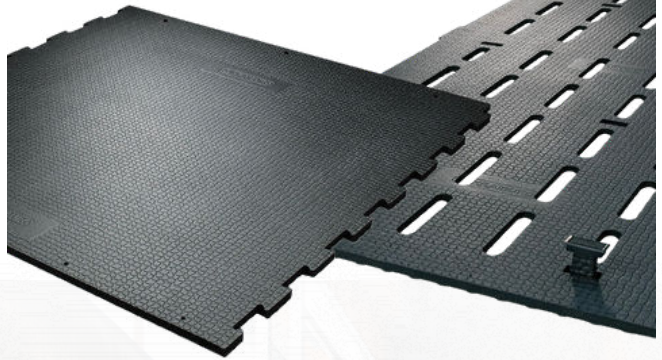
Slatted Flooring for Cattle

- ✓ 3/4" thick
- ✓ Improves slip-resistance which reduces the risk of injury and animal loss
- ✓ Interlocking edges create seamless surface
- ✓ Custom cut to fit your facility



CIRRUS

**Durable & Economical
For Large Scale Operations**



LOSPA Swiss

For High Stress Environments



(920) 922-1970



Scan Now!
agromatic.net

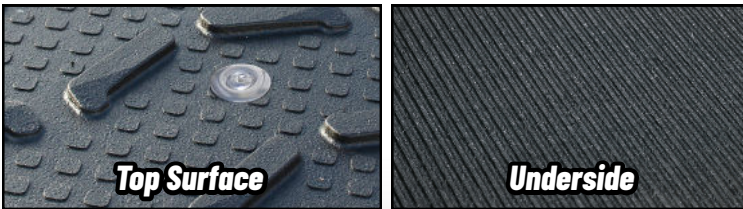


Flooring for Cattle

MONTA



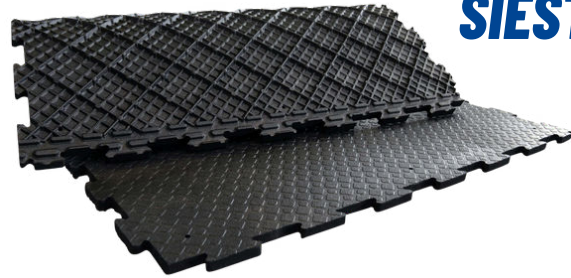
- Thickness: 1"
- Raised profile ensures traction in heavily trafficked areas
- Improves grip on sloped areas
- Allows for easy navigation in both directions



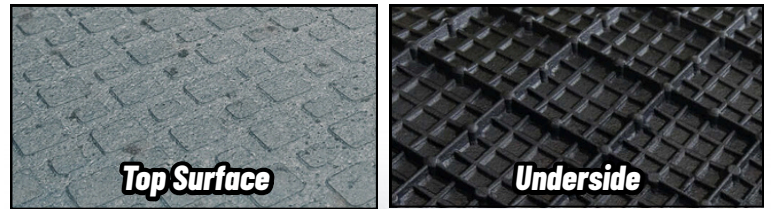
Recommended by Dr. Nels Lindberg!



SIESTA



- Thickness: 1-1/4"
- Better footing and ideal softness for optimal traction
- Ideal for calving pens
- Solid footing for any ranch hand's work area



LOMAX

- Thickness: 1"
- Adapts to any subsurface
- Simple installation
- Perfect for: soil stabilization, wash areas, and calf facilities
- Suitable for a temporary or permanent solution

